

Wright State University

CORE Scholar

College of Science and Mathematics
Newsletters

College of Science and Mathematics

Fall 2015

College of Science and Mathematics Newsletter, Fall 2015

College of Science and Mathematics

Follow this and additional works at: https://corescholar.libraries.wright.edu/cosm_newsletters



Part of the [Higher Education Commons](#), and the [Physical Sciences and Mathematics Commons](#)

Repository Citation

College of Science and Mathematics (2015). *College of Science and Mathematics Newsletter, Fall 2015*. Dayton, OH: Wright State University College of Science and Mathematics.

This Newsletter is brought to you for free and open access by the College of Science and Mathematics at CORE Scholar. It has been accepted for inclusion in College of Science and Mathematics Newsletters by an authorized administrator of CORE Scholar. For more information, please contact library-corescholar@wright.edu.

SHARE:

[Join Our Email List](#)

The latest news and announcements from the
Wright State University College of Science and Mathematics



Fall 2015



Using science and mathematics to understand our world

These are equations that students, faculty and graduates of the College of Science and Mathematics come into contact with. They are beautifully simple. They are memorable. They are useful. They explain our world.

[Read more.](#)

Alumni Spotlight

Statistics graduate Whit Alley '15 scores with Nielsen Ratings

When Wright State statistics student Whit Alley got a high-five from interviewers at Nielsen Ratings, he was pretty sure a job offer was coming. Alley had just exposed a trick statistics question posed by the interviewers, something none of the other job candidates that day had done. "The interviewers asked me the question, and I smile a little bit because I'm thinking back to my class," Alley recalled. "I said, 'Actually, you can't say that.'

[Read more.](#)



Biological Sciences alumna Julie Bonsall '12 leads pioneering wellness program at RTA

When she was studying biology at Wright State University, Julie Bonsall had her sights set on medical school. But along the way she fell in love with personal training and began longing for a career helping people get healthy through diet and exercise. Today, Bonsall is the employee wellness coordinator at the Greater Dayton Regional Transit Authority, an agency of 600 workers who operate 29 bus routes in the region. [Read more.](#)

COSM Spotlight

Shaping student success

"Student success" is the latest hot topic in higher education, and everyone wants a piece of it. There are new student success centers popping up all across campus; new positions dedicated solely to developing student success initiatives; and new class offerings and enrichment programs designed exclusively for the promotion of student success.

[Read more.](#)



The College of Science and Mathematics and Office of Latino Affairs co-host Math Boot Camp

This is the second year that middle and high school students have come to Wright State University to better their STEMM (science, technology, engineering, mathematics and medicine) skills. The

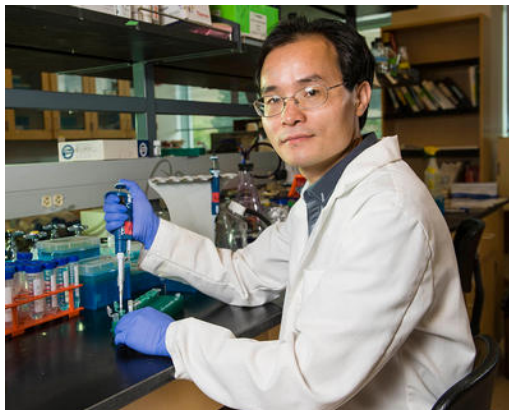


Math Boot Camp provides an opportunity for minority students to practice fundamental skills in proportionality, basic statistics, linear relationships and exponential equations using multiple teaching strategies in a university environment. [Read more.](#)

Madhavi Kadakia uses her genomics skills to battle cancer

Skin cancer, esophageal cancer and endometriosis are all on Madhavi Kadakia's hit list. The Wright State University researcher has been using high technology and her expertise in genetics to help diagnose and treat these sometimes deadly diseases.

[Read more.](#)



Weiwen Long and his research team seek to unlock mysterious cancer-connected gene

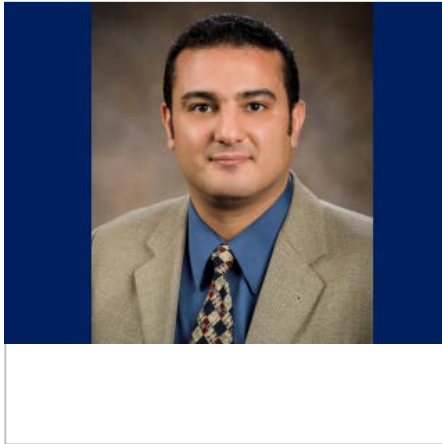
Weiwen Long, assistant professor of biochemistry and molecular biology, recently received a \$1.7 million, five-year grant from the National Cancer Institute. Long and his team will conduct research to unlock the mysteries of a gene that plays an important role in the formation and spread of lung cancer and other cancers. [Read more.](#)

Tamera Schneider takes prestigious rotating scientist position at National Science Foundation

Wright State University psychology professor Tamera Schneider will be shaping the future of social psychology by directing federal resources as program director at the National Science Foundation. Schneider began her duties Aug. 10 in the Washington, D.C. area as head of the

NSF's social psychology program in the Division of Behavioral and Cognitive Sciences.

[Read more.](#)



President's Award for Early Career Achievement

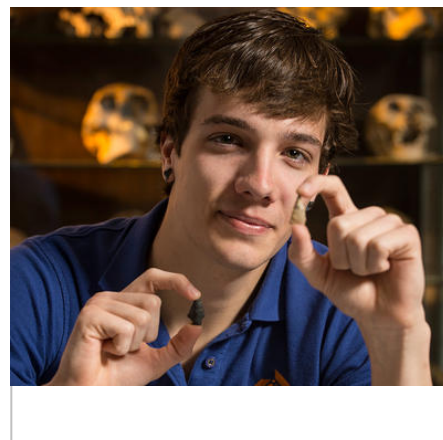
Sherif Elbasiouny, Ph.D., assistant professor in the Department of Neuroscience, Cell Biology and Physiology, received the President's Award for Excellence for Early Career Achievement. Elbasiouny has joint appointments in the Boonshoft School of Medicine, College of Science and Mathematics and the College of Engineering and Computer Science. Showing his interdisciplinary knowledge and collaboration, he was nominated by colleagues in all three colleges. [Read more.](#)

Student Spotlight

Digging up the past

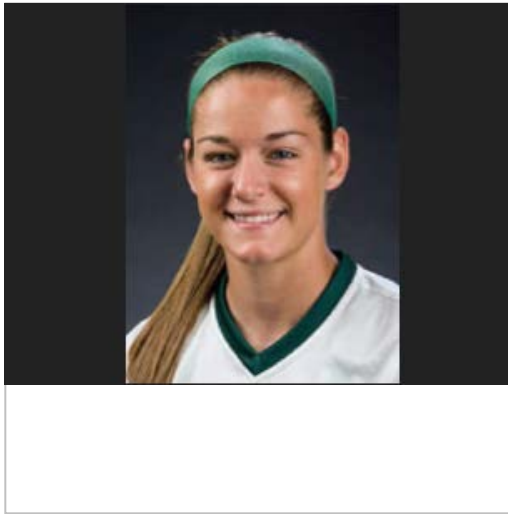
Imagine walking through a field and finding prehistoric projectile points (or arrowheads), fish hooks, a knife, animal remains, a scraper and pottery shards. That is what Wright State student Tyler Heneghan found through his school field work at the Fort Ancient Earthworks, along with learning experimental archaeology through his internship at the Dayton Society of Natural History and his time at Sun Watch Indian Village.

[Read more.](#)



Biological Sciences major, Natalie Sedlock looks forward to her final soccer season

Wright State University soccer coach Pat Ferguson has been coaching Natalie Sedlock in some capacity since she was 11, or for nearly half of her



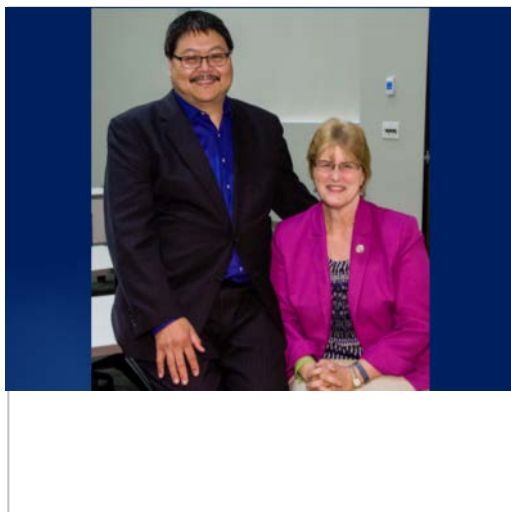
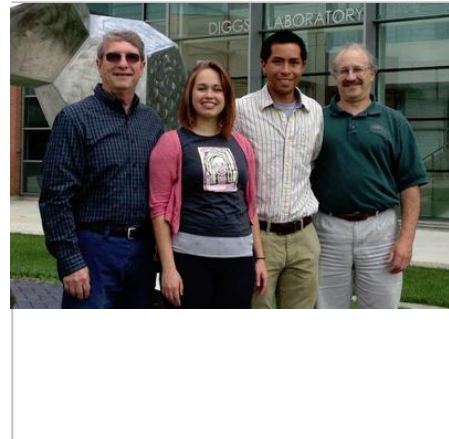
life. Ferguson may not have known little 11-year-old Natalie would someday become one of his star players at Wright State, but he certainly recognized potential. Sedlock scored 12 goals as a senior at Beavercreek, then chose Wright State for college because, she said, she was comfortable with Ferguson and wanted to stay close to home. [Read more.](#)

Supporting the College

Dale True '76 helps provide experiential learning opportunities for students

Student success is at the heart of the College of Science and Mathematics. By providing opportunities for undergraduate research and hands-on experiential learning, we equip our students with the skills they need to excel in the workplace. These life-changing moments are greatly enhanced through the generosity of our many donors, like Dale True '76, who recognize the need to provide experiences outside of the classroom where students can hone their skills and pursue their passions.

[Read more.](#)



Academic Entrepreneurship - turning insightful discoveries into reality

Academic researchers are naturally positioned as "21st Century" thought leaders. Traditionally, research discoveries are shared through publications, conferences and textbooks. In fact the textbook publication model is a long-accepted way in academia of blending scholarly and commercial activities. In the innovative spirit of Wright State University, and specifically in the Biomedical Sciences Ph.D. [Read more.](#)

Announcements

- [The College of Science and Mathematics Faculty Teaching Awards 2014-15](#)
- [New Student Success Center Building a Big Success](#)
- [Ayşe Sahin, Ph.D appointed as Chair of the Department of Mathematics and Statistics](#)
- [Department of Earth and Environmental Sciences Receives Advanced Seismic Source](#)

STAY CONNECTED:

