

January 1981

Dedication of the Frederick A. White Center for Ambulatory Care

Wright State University

Follow this and additional works at: https://corescholar.libraries.wright.edu/archives_wsu_brochures

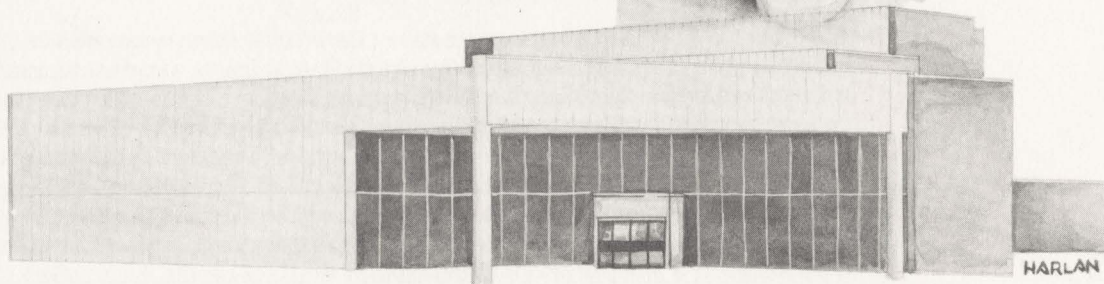
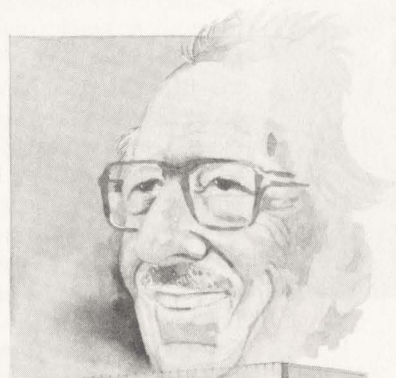
Repository Citation

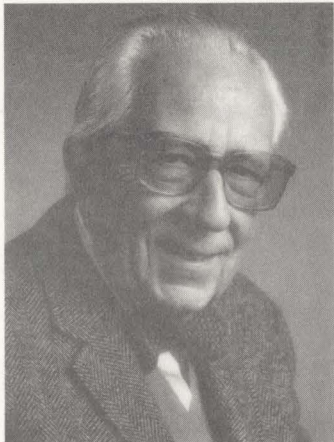
Wright State University (1981). *Dedication of the Frederick A. White Center for Ambulatory Care.* : Wright State University.

This Brochure is brought to you for free and open access by the University Archives at CORE Scholar. It has been accepted for inclusion in Wright State University Brochures by an authorized administrator of CORE Scholar. For more information, please contact corescholar@www.libraries.wright.edu, library-corescholar@wright.edu.

Dedication of the
Frederick A. White
Center For Ambulatory Care

Wright State University
September 20, 1981





Frederick A. White

In October, 1962, Frederick A. White became the first employee of the combined branch campus of the Miami and Ohio State Universities. As the major figure in the evolution of the branch campus until it reached independence in 1967, Fred White earned the name of "The Father of Wright State." He watched the university grow from sketches on paper to a 618-acre campus with more than 15,000 students. Responsible for the development of the original tunnel system connecting the four main academic buildings, he took special pride in making Wright State accessible to disabled persons. Fred White's commitment to Wright State led him to serve as business manager, vice-president, acting president, and finally, at the time of his death in 1980, as senior vice-president emeritus. His personal qualities of dignity, compassion, determination, and vision embody the progressive spirit of Wright State and it is a fitting tribute to Fred White's contributions that the new Ambulatory Care Center is named in his honor.

Frederick A. White Center for Ambulatory Care

The Frederick A. White Center for Ambulatory Care fulfills an important mission, providing both professional education for Wright State students and medical care for the surrounding community. Student physicians, nurses, psychologists, and other health care personnel receive training from the center's staff; treatment, however, is carried out only by licensed and qualified professionals. Designed by the Dayton architectural firm of Levin, Porter, and Smith, the two-story, 55,000-square-foot building includes extensive diagnostic and therapeutic facilities, as well as an urgent care unit for patients needing immediate attention. The center, divided into a series of units or modules, functions much like the office of a group of private doctors and other professionals. Each patient is treated by an individual physician, or other health care provider, who delivers personal and family care. Today's dedication of the Frederick A. White Center for Ambulatory Care represents another milestone in Wright State University's commitment to providing quality health care.

Program

Welcome	Robert J. Kegerreis President Wright State University
Remarks	Frederick N. Young Wright State University Board of Trustees
Report to the Community	John R. Beljan Provost Wright State University
In Honor of Fred White	Mrs. Fred A. White Dr. Kegerreis
Ohio Senate Resolution	R. Michael DeWine Senator, Tenth District, State of Ohio
Ribbon Cutting	Mrs. White The Honorable Frederick L. Berta, Mr. Young Mayor of Beaver creek Dr. Kegerreis The Honorable Tony Torch, Dr. Beljan Mayor of Fairborn The Honorable Walter L. Marshall, Mayor of Xenia
Closing	Dr. Kegerreis

Musical selections provided by the Wright State University Symphony Band, conducted by Lawrence R. Mallett, director of bands.

Tours of the Frederick A. White Center for Ambulatory Care will follow the ceremony.

Frederick A. White Center for Ambulatory Care
Dedication Committee

Robert Pezzoli, Co-chairer
Frederick A. White Center for Ambulatory Care

Lorna Dawes, Co-chairer
University and Community Events

Marlene Acus
Fairborn Medical Facilities

David Buzzard
University Communications

Ruth Hardin
Communications, School of Medicine

Lilburn P. Hoehn
Vice-President of the University Faculty, 1980-81

Nancy Janssens
School of Nursing

Larry Kinneer
University Communications

O.E. Pollock
Wright State University Foundation

Special thanks to James Harper, Presidential Art Medals, Inc., and the Mead Corporation.