

Wright State University

CORE Scholar

Board of Trustees Minutes

University Archives

12-13-2012

WSU Board of Trustees Meeting Minutes, December 13-14, 2012

Follow this and additional works at: https://corescholar.libraries.wright.edu/archives_trustees_minutes



Part of the [Educational Leadership Commons](#)

Repository Citation

(2012). WSU Board of Trustees Meeting Minutes, December 13-14, 2012. .
https://corescholar.libraries.wright.edu/archives_trustees_minutes/267

This Minutes is brought to you for free and open access by the University Archives at CORE Scholar. It has been accepted for inclusion in Board of Trustees Minutes by an authorized administrator of CORE Scholar. For more information, please contact library-corescholar@wright.edu.

**WRIGHT STATE UNIVERSITY
BOARD OF TRUSTEES
OFFICIAL PROCEEDINGS OF THE
TWO HUNDRED AND EIGHTEITH MEETING**

December 13 and 14, 2012

INDEX

| | <u>Page</u> | <u>Resolution</u> |
|--|--------------------|--------------------------|
| I. CALL TO ORDER | 1 | |
| II. PROOF OF NOTICE OF MEETING | 1 | |
| III. DISPOSITION OF PREVIOUS MINUTES | 1 | |
| IV. EXECUTIVE SESSION | 1 | 13-15 |
| V. RECESS | 2 | |
| VI. RECONVENE | 2 | |
| VII. REPORT OF THE CHAIR | 3 | |
| A. Written Reports – WSU Board of Trustees November 16, 2012 | | |
| B. Introduction and Installation of Michael Bridges (New WSU trustee) | 3 | |
| VIII. REPORT OF THE PRESIDENT | 3 | |
| A. University Update | 3 | |
| B. Approval of December Graduates | 4 | 13-16 |
| C. Facility Security Clearance | 7 | 13-17 |
| D. Tenure-Dr. Ahsan Mian | 8 | 13-18 |
| E. Confirmation of Academic & Administrative Appointments & Changes | 8 | 13-19 |
| F. Report of Investments | 14 | |
| G. Ratification of Contracts and Grants | 14 | 13-20 |
| IX. REPORTS OF THE COMMITTEES OF THE BOARD | 39 | |
| A. Academic Affairs Committee | 39 | |
| B. Finance and Audit Committee | 41 | |
| C. Student Affairs Committee | 43 | |

| | | |
|-------|--|----|
| D. | Student Trustees' Report | 45 |
| E. | Faculty President's Report | 46 |
| X. | PRESENTATION AND POLICY DISCUSSIONS | 47 |
| | Dr. Rosalie Mainous Dean, College of Nursing & Health | |
| XI. | UNFINISHED BUSINESS | 47 |
| | None | |
| XII. | NEW BUSINESS | 47 |
| | A. Next Committee Day, Friday, February 1, 2013 | |
| | B. Next Board Meeting, Executive Session, February 14, 2013 Public Session, February 15, 2013 | |
| | C. Lake Campus Regional Summit, February 22, 2013 | |
| | D. President's Lecture Series-Neil deGrasse Tyson, March 7, 2013, 7 p.m., Apollo Room | |
| XIII. | ADJOURNMENT | 47 |
| XIV. | APPENDIX – WRITTEN REPORTS | 48 |

**WRIGHT STATE UNIVERSITY
BOARD OF TRUSTEES
OFFICIAL PROCEEDINGS OF THE TWO HUNDRED AND EIGHTIETH MEETING**

December 13 and 14, 2012

I. CALL TO ORDER

The meeting of the Wright State University Board of Trustees was called to order by Mr. Larry Klaben, chair, on Thursday, December 13, 2012, 4:00 p.m., in 158 University Hall. Dr. Robert J. Sweeney, secretary to the Board of Trustees, called the roll:

Present

Michael Bridges
Eloise Broner
Nina Joshi
Larry R. Klaben
John C. Kunesh
Grace Ramos
Vishal Soin

Absent

Fred Strahorn

II. PROOF OF NOTICE OF MEETING

Mr. Klaben reported that this meeting was called by written notification and a quorum was present.

III. DISPOSITION OF PREVIOUS MINUTES

Mr. Klaben moved to approve the October 11 and 12, 2012 minutes as submitted. Ms. Ramos seconded, and the motion was unanimously approved by voice vote.

IV. EXECUTIVE SESSION

In accordance with the Ohio Open Meetings Law, the Board, after a majority of a quorum, determined to hold an Executive Session by offering the following resolution:

RESOLUTION 13-15

RESOLVED that the Wright State University Board of Trustees agreed to hold Executive Session on Thursday, December 13, 2012; and be it further

RESOLVED that pursuant to the Ohio Revised Code 121.22 (G), the following issues may be discussed in Executive Session:

- Legal Report

- Potential dismissal, demotion, or discipline of a tenured faculty member, and pertinent personnel matters
- Purchase of real property by WSU Foundation, Inc., and pertinent real estate matters

Mr. Klaben moved for approval. Dr. Kunesh seconded, and the motion was unanimously approved by roll call vote.

V. **RECESS**

Following the Executive Session several WSU Trustees joined President and Mrs. Hopkins at the Student Union for the Madrigal Dinner.

VI. **RECONVENE - ROLL CALL**

The Wright State University Board of Trustees reconvened on Friday, December 13, 2012, 8:30 a.m., in E156 Student Union. Dr. Sweeney called the roll:

Present

Michael Bridges
Eloise P. Broner
Larry R. Klaben
John C. Kunesh
Grace Ramos
Vishal Soin
Anne Reagan

Absent

Nina Joshi
Fred Strahorn

Mr. Klaben stated that the Wright State University Board of Trustees is a public body subject to the Ohio Open Meetings Act. It operates on a fixed agenda available to those attending the meeting. Persons wishing to address the board in its Public Session should submit a written request to the Board of Trustees' office 72 hours in advance of the meeting in order to be placed on the agenda. However, all persons address the board at the invitation of the board and are subject to time limitations and other guidelines established to maintain the good order of the meeting.

VII. REPORT OF THE CHAIR

A. Written Reports - Wright State University Board of Trustees November 16, 2012

The Advancement, the Building & Grounds, Communications & Marketing, Enrollment Management, Multicultural & Community Engagement and Research & Sponsored Programs Reports as presented to this meeting be, and the same hereby accepted. The reports are contained in the appendix.

B. Introduction of Michael Bridges—new member of WSU Board of Trustees

Governor John Kasich has appointed Mr. Michael Bridges, president of Peerless Technologies Corporation and a Wright State graduate to the Wright State University Board of Trustees. Mr. Bridges replaces Mr. Robert Nevin and will serve a term of nine years.

Mr. Bridges graduated from Wright State in 1981 in systems engineering, mechanical options. He embarked on a 20-year career in defense contracting, working for firms from San Diego to Washington DC, before returning home and then starting his own company in 2000.

C. Installation of Board Member: Mr. Michael Bridges

The oath of office was administered to the new trustee by Ms. Gwen Mattison, General Counsel at Wright State University.

VIII. REPORT OF THE PRESIDENT

A. University Update

Dr. David R. Hopkins provided an update on selected university activities:

1. Dr. Hopkins welcomed the newest member to the Wright State University Board of Trustees, Mr. Michael Bridges.
2. Drs. Joe Schlater and Carl Brun received funding for an internship co-op funding program. The recession caused the funding to be limited, but Dr. Hopkins received word that the Governor has awarded \$11 million to 22 institutions in the state of Ohio. Wright State received \$1.3 million which was matched by 30 local companies who contributed \$1.7 million. This is a real achievement for those who have worked so hard on this project. We can hopefully

- keep the best and brightest in Ohio.
3. In September 2012, Governor John Kasich met with the leaders of Ohio's public colleges and universities and asked them to work together to recast the state's funding formula for higher education so that it rewards student success and completion. The Governor President E. Gordon Gee of The Ohio State University to gather and lead a funding formula commission to research how to most effectively allocate the state's funds, and set a Thanksgiving deadline for receipt of the commission's recommendations. This work was completed and reported to the Governor, who in turn held a press conference on November 30th stating it would be implemented into the funding policy over a 2-year biannual budget cycle. Over the last 4 years we have lost more than 20% of our state support for instruction. We are hoping to replenish states funding support via this formula. The Governor will reveal the amount for the budget by February 1st, which is good news for the state, not just Wright State.
4. The 45th Anniversary celebration of Wright State was a huge success. It reminded everybody how far we have come and the value of higher education.
5. Dr. Hopkins reported that Wright State is in the process of revitalizing our strategic plan. Our goal is to bring our revitalized plan to the Board by April 25th for approval. He encouraged everyone to participate in this process.

B. Approval of December Graduates

Winter commencement will be held on Saturday, December 15, 2012, 10:00 a.m. in the Ervin J. Nutter Center.

Section 1.03 of the Wright State University Code of Regulations provides that the Board of Trustees shall grant degrees to qualified graduates after due consideration of nominations by the faculty.

Since applications for degrees are accepted in advance, the recommendation was made that change in the list to correct errors and to add or delete names of persons who unexpectedly will or will not meet all requirements for graduation is permitted. A list of winter 2012 degrees follows, along with comparison figures for fall 2011.

2011 2012

Business and Administration

Bachelor of Science in Business 136 236

Education and Human Services

Bachelor of Science 126 243
 Bachelor of Science in Education 51 64

Engineering & Computer Science

Bachelor of Science in Biomedical Engineering 7 6
 Bachelor of Science in Computer Engineering 3 11
 Bachelor of Arts in Computer Science 2 9
 Bachelor of Science in Computer Science 10 23
 Bachelor of Science in Electrical Engineering 10 26
 Bachelor of Science in Engineering Physics 0 3
 Bachelor of Science in Human Factors Engineering 0 0
 Bachelor of Science in Industrial & Systems Engineering 3 3
 Bachelor of Science in Mechanical Engineering 21 49
 Bachelor of Science in Materials Science and Engineering 1 0

Liberal Arts

Bachelor of Arts 185 247
 Bachelor of Fine Arts 19 26
 Bachelor of Music 7 3
 Bachelor of Science 3 7

Nursing and Health

Bachelor of Science in Nursing 142 148

Science and Mathematics

Bachelor of Arts 60 75
 Bachelor of Science 64 97
 Bachelor of Science in Clinical Laboratory Science 0 0

School of Graduate Studies

Doctor of Philosophy 21 36

| | | |
|---|-----|-----|
| Educational Specialist | 0 | 0 |
| Doctor of Nursing Practice | 0 | 4 |
| Master of Accountancy | 18 | 9 |
| Master of Arts | 20 | 38 |
| Master of Business Administration | 145 | 163 |
| Master of Clinical Psychology | 1 | 14 |
| Master of Education | 186 | 149 |
| Master of Engineering Innovation and Entrepreneurship | 6 | 3 |
| Master of Humanities | 6 | 3 |
| Master of Information Systems | 0 | 9 |
| Master of Music | 3 | 4 |
| Master of Public Administration | 7 | 8 |
| Master of Public Health | 27 | 15 |
| Master of Rehabilitation Counseling | 7 | 8 |
| Master of Science | 176 | 155 |
| Master of Science in Computer Engineering | 7 | 7 |
| Master of Science in Engineering | 83 | 67 |
| Master of Science in Leadership Development | 0 | 2 |
| Master of Science in Teaching | 3 | 6 |
| Master of Urban Administration | 0 | 0 |

School of Medicine

| | | |
|--------------------|---|---|
| Doctor of Medicine | 1 | 0 |
|--------------------|---|---|

School of Professional Psychology

| | | |
|----------------------|----|----|
| Doctor of Psychology | 18 | 21 |
|----------------------|----|----|

Wright State University Lake Campus

| | | |
|-------------------|-----------|-----------|
| Associate Degrees | <u>15</u> | <u>43</u> |
|-------------------|-----------|-----------|

| | | |
|---------------------|---------------------|---------------------|
| <i>Total</i> | <u>1,600</u> | <u>2,040</u> |
|---------------------|---------------------|---------------------|

RESOLUTION 13-16

RESOLVED that the candidates for degrees for August and December 2012 be and hereby are confirmed and approved.

Mr. Soin moved for approval. Dr. Kunesh seconded, and the motion was unanimously approved by voice vote.

C. **Facility Security Clearance**

RESOLUTION 13-17

WHEREAS, Wright State University wishes to maintain its facility security clearance through the Defense Security Service, and

WHEREAS, those persons occupying the following positions among the officers and officials at Wright State University shall be known as Key Management Personnel (KMP) as described in the National Industrial Security Program Operating Manual:

Dr. David R. Hopkins
President

Dr. Thomas A. Sudkamp
Provost

Dr. Robert E. W. Fyffe
Vice President for Research

Ms. Ellen Reinsch Frieze
Assistant Vice President, Office of Research & Sponsored Programs

WHEREAS, the Chief Executive and the KMP have been processed, or will be processed, to the level of the facility clearance granted to this institution, as provided for in the aforementioned National Industrial Security Program Operating Manual; and

WHEREAS, the said KMP are hereby delegated all of the Board's duties and responsibilities pertaining to the protection of classified information under classified contracts of the Department of Defense or User Agencies of its Industrial Security Program awarded to Wright State University; and

WHEREAS, the following named members of the Board of Trustees shall not require, shall not have, and can be effectively excluded from access to all classified information in the possession of Wright State University, and do not occupy positions that would enable them to affect adversely the policies and practices of Wright State University in the performance of classified contracts for the Department of Defense or User Agencies of its Industrial Security Program, awarded to Wright State University, and need not be processed for a personnel clearance:

Michael Bridges
 Eloise P. Broner
 Nina Joshi
 Larry R. Klaben

John C. Kunesh
 Grace Ramos
 Vishal Soin
 Fred Strahorn

THEREFORE be it

RESOLVED that the Board of Trustees of Wright State University authorizes the establishment of the above KMP and this resolution supersedes Resolution 12-17 dated November 18, 2011.

Dr. Kunesh moved for approval. Mr. Bridges seconded, and the motion was unanimously approved by voice vote.

D. Tenure

The following faculty member was granted tenure at Associate Professor:

Dr. Ahsan Mian
 Associate Professor
 Mechanical and Materials Engineering

RESOLUTION 13-18

RESOLVED that the tenure recommendation as submitted to this meeting be, and the same hereby are approved.

Mrs. Broner moved for approval. Mr. Bridges seconded and the motion was unanimously approved by roll call vote.

E. Confirmation of Academic and Administrative Appointments and Changes

Faculty New Hires

Marjorie A. Bowman, M.D., M.P.A., has been appointed Professor and Dean, Boonshoft School of Medicine, effective October 1, 2012.

Donald L. Clark, M.D., has been appointed Assistant Professor, Family Medicine, Boonshoft School of Medicine, effective October 15, 2012.

Michelle Eismann, M.S.N., has been appointed Clinical Instructor, College of Nursing and Health, effective November 13, 2012.

Smita Krishnamurthy, M.D., has been appointed Assistant Professor, Pathology, Boonshoft School of Medicine, effective October 1, 2012.

Michael A. Saville, Ph.D., has been appointed Assistant Professor, Electrical Engineering, College of Engineering and Computer Science, effective November 26, 2012.

Faculty Separations

Farhat N. Ashai-Khan, M.D., Assistant Professor, Pediatrics, Boonshoft School of Medicine, effective November 30, 2012.

Albert F. Painter, Psy.D., Associate Professor and Director of Continuing Medical Education, Family Medicine, Boonshoft School of Medicine, effective October 31, 2012.

Unclassified New Hires

Mark K. Brooks, J.D., has been appointed Senior Advisor for Government Affairs, Wright State Research Institute, College of Engineering and Computer Science, effective November 5, 2012.

LaKeysha R Catron, M.A., has been appointed Assistant Dean for Academic Affairs, College of Liberal Arts, effective October 26, 2012.

Steven R Colby, A.A.S., has been appointed Chief of Training Delivery System, Wright State Research Institute, College of Engineering and Computer Science, effective November 5, 2012.

Marisela A. Dallman, B.S., has been appointed Research Technician, NeuroScience, Cell Biology and Physiology, Boonshoft School of Medicine, effective October 22, 2012.

William J. Donlon, Sr., B.S., has been appointed Basketball Operations Director, Intercollegiate Athletics, effective October 8, 2012.

Sandeep Gogineni, Ph.D., has been appointed Research Engineer, Wright State Research Institute, College of Engineering and Computer Science, effective November 1, 2012.

Mark A. Horsley, B. Arch., has been appointed Facilities Planner, Facilities Planning and Development, effective October 1, 2012.

Marcella Hurtado Gomez, Ph.D., has been appointed Internal Program Evaluator, Biological Sciences, College of Science and Mathematics, effective November 19, 2012.

Karen M. Jacobs, R.N., M.S.N., has been appointed Research Coordinator, Dayton Clinical Oncology Program, Boonshoft School of Medicine, effective November 5, 2012.

Sheryl S. Kent, M.R.C., has been appointed Career Advisor Manager, Wright State Research Institute, College of Engineering and Computer Science, effective November 1, 2012.

Anna M. Maresca, B.S., has been appointed Junior Research Analyst, Wright State Research Institute, College of Engineering and Computer Science, effective October 1, 2012.

David Montano, M.H.R., has been appointed Chief of Training Development, Wright State Research Institute, College of Engineering and Computer Science, effective October 8, 2012.

David A. Morehouse, Ph.D., has been appointed Chief of Testing and Evaluation, Wright State Research Institute, College of Engineering and Computer Science, effective November 1, 2012.

Kenneth L. Nelson, B.S., has been appointed Systems Programmer, Computing and Telecommunications Services, effective November 19, 2012.

Fnu Sandeep S. Paul, B.E., has been appointed Software Developer, College of Engineering and Computer Science, effective October 11, 2012.

Seth D Ratliff has been appointed Tec^Edge Machinist Fabricator, Wright State Research Institute, College of Engineering and Computer Science, effective October 1, 2012.

Lisa P. Rickey, M.LIS, M.A., C.A., has been appointed Archivist, Special Collections and Archives, P.L. Dunbar Library, effective November 5, 2012.

Fnu Sandeep Suman Paul, B.E., has been appointed Software Developer, College of Engineering and Computer Science, effective October 11, 2012.

Brittney Whiteside, M.R.C., has been appointed Special Assistant to the Athletics Director, Intercollegiate Athletics, effective November 16, 2012.

Unclassified Promotions

Sylvia I. Brockman, B.A., has been appointed Director of Benefits and Compensation, Department of Human Resources, effective November 1, 2012.

Carlotta F. Johnson has been appointed Compensation Analyst, Human Resources, effective November 1, 2012.

Harriet G. Knowles, M.S.N., has been appointed External Director Nursing Institute, College of Nursing and Health, effective October 8, 2012.

Brendan Mullins, B.A., has been appointed Assistant Men's Basketball Coach, Intercollegiate Athletics, effective October 1, 2012.

Lindsey A. Patrick, B.A., has been appointed Benefits Analyst, Human Resources, effective October 1, 2012.

Debra D. Radford, B.A., has been appointed Business Manager, Budget Planning and Resource Analysis, effective October 1, 2012.

John Rogers, III, M.Ed., has been appointed Director, Orientation, Enrollment Management Division, effective October 1, 2012.

Andrew Martin Rouhier, M.B.A., has been appointed Assistant Director, Office of Financial Aid, Enrollment Management Division, effective October 1, 2012.

Melissa K. Rubins, B.A., has been appointed Assistant to the Dean, College of Education and Human Services, effective October 1, 2012.

Unclassified Separations

Katrina A. Beaver, Graphic Designer Assistant, College of Engineering and Computer Science, effective October 26, 2012.

Anne M. Carlisle, B.S., Research Program Assistant, Lifespan Health Research Center, Boonshoft School of Medicine, effective November 2, 2012.

Tracy Collins, Ph.D., Postdoctoral Research Fellow, Biological Sciences, College of Science and Mathematics, effective September 20, 2012.

Heather Dwire, M.S.M.E., Research Associate, Biomedical, Industrial and Human Factors Engineering, College of Engineering and Computer Science, effective October

11, 2012.

Timothy Gaffney, B.A., Assistant Director Media Relations and Communications, Communications and Marketing, effective October 12, 2012.

Corey A. Griest, B.S., Assistant Director, Facilities and Operations, Intercollegiate Athletics, effective October 13, 2012.

Amy M. Hall, R.N., B.S.N., Clinical Data Coordinator, Dayton Clinical Oncology Program, Boonshoft School of Medicine, effective November 21, 2012.

Hui He, Ph.D., Research Assistant Professor, Graduate School, effective September 30, 2012.

Tonya Mathis, B.S., Associate Director, Student Activities, effective November 2, 2012.

Jessica Miller, B.B.A., Accountant, College of Science and Mathematics, effective November 26, 2012.

Jean M. Payne, B.A., Senior Data Collection Specialist, Lifespan Health Research Center, Boonshoft School of Medicine, effective October 12, 2012.

Jocelyn Piccone, M.H.A., Chief Operating Officer, Faculty and Clinical Affairs, Boonshoft School of Medicine, effective November 2, 2012.

Bala Kishore Pothuluri, M.S., Systems Engineer, Wright State Research Institute, College of Engineering and Computer Science, effective November 20, 2012.

Kalyan Babu Saladi, B.E., Business Analyst, Wright State Research Institute, College of Engineering and Computer Science, effective October 26, 2012.

Terea Shambry-Wollins, M.A., Technology Liaison and Systems Analyst, Ohio Articulation and Transfer Network, effective October 5, 2012.

Megumi Spoonster, B.S., STEMM Communications Assistant, Computer Science, College of Engineering and Computer Science, effective October 12, 2012.

Charlotta R. Taylor, M.S., Associate Director of Academic Support and Recruitment, Student Affairs and Admissions, Boonshoft School of Medicine, effective October 2, 2012.

Monica L. Walker, B.A., Community Educator and Project Coordinator, Substance Abuse Resources and Disabilities Issues Program, Boonshoft School of Medicine, effective September 29, 2012.

Jianhong Yao, M.S., Research Associate, Biochemistry and Molecular Biology, Boonshoft School of Medicine, effective August 31, 2012.

Classified New Hires

Beverly J. Mason has been appointed Records Technician 2, Graduate School, effective October 8, 2012.

Lori A. Morris has been appointed Account Clerk, NeuroScience, Cell Biology and Physiology, Boonshoft School of Medicine, effective November 19, 2012.

Andrea N. Peterson, A.S., has been appointed Collections Specialist, Office of the Bursar, effective October 15, 2012.

Diana Riggs, B.A., has been appointed Marketing Program Facilitator, Disability Services, effective November 26, 2012.

Classified Promotions

Shirley A. Barber, B.A., has been appointed Office Services Coordinator, Center for Urban and Public Affairs, effective October 15, 2012.

Sherri R. Blatz has been appointed Financial Aid Coordinator, Office of Financial Aid, Enrollment Management Division, effective October 1, 2012.

Jackie L. Hockett, Jr. has been appointed Grounds Maintenance Supervisor, Grounds Maintenance, Physical Plant, effective October 27, 2012.

Patti J. Mutter has been appointed Human Resources Assistant, Human Resources, effective November 5, 2012.

Katelyn M. Sibrel, A.A.S., has been appointed Financial Aid Coordinator, Office of Financial Aid, Enrollment Management Division, effective October 1, 2012.

Bethany J. Stroud, B.S., has been appointed Student Services Coordinator, Graduate School, effective October 13, 2012.

Classified Separations

Kelly D. Faas, Account Clerk 3, Theatre Arts, College of Liberal Arts, effective November 23, 2012.

Torunya Mitchell, Office Assistant 2, Management, Raj Soin College of Business, effective November 9, 2012.

RESOLUTION 13-19

RESOLVED that the academic and administrative appointments, changes, retirements, departmental reporting, resignations and terminations submitted to this meeting be, and the same hereby are approved.

Mr. Klaben moved for approval. Dr. Kunesh seconded, and the resolution was approved by roll call vote.

F. Report of Investments

Since the last Board meeting, investments for September and October 2012 have been received. These reports have been distributed to the trustees and will be filed with the official Board of Trustees' records.

G. Ratification of Contracts and Grants

Wright State University has recorded \$54,377,240 in external funding for 209 awards for the time period of July 1, 2012 through October 31, 2012. Recently funded projects include a \$90,000 award from a WBB, Inc. federal contract to Mr. Earl Gregorich (SBDC, Raj Soin College of Business) for the provision of business consultation services to Edaptive Computing. Dr. Donna M. Curry (College of Nursing and Health) received a \$319,200 award from US Department of Health and Human Services' Health Resources and Services Administration to fund graduate nursing student matriculation support. Dr. Thomas Skilmer (Physics) was awarded \$458,471 from the National Science Foundation to further examine the field of Nuclear Magnetic Resonance (NMR) spectroscopy.

RESOLUTION 13-20

RESOLVED that the contracts and grants submitted to this meeting be, and the same hereby are ratified.

Ms. Ramos moved for approval. Mrs. Broner seconded, and the resolution was approved by roll call vote.

**WRIGHT STATE UNIVERSITY
GRANT AND CONTRACT AWARDS**

**PREPARED FOR
BOARD OF TRUSTEES MEETING
December 14, 2012***

| TYPE | NEW AWARDS | | ONGOING AWARDS** | | TOTAL AWARDS | |
|-----------------------|------------|--------------------|------------------|---------------------|--------------|---------------------|
| | Number | Dollars | Number | Dollars | Number | Dollars |
| Research | 20 | \$1,858,833 | 29 | \$3,566,767 | 49 | \$5,425,600 |
| Instruction | 3 | \$320,393 | 5 | \$306,250 | 8 | \$626,643 |
| Institutional Support | 0 | | 6 | \$1,749,944 | 6 | \$1,749,944 |
| Public Service | 6 | \$224,098 | 10 | \$1,811,697 | 16 | \$2,035,795 |
| Student Aid | 2 | \$337,545 | 7 | \$13,189,080 | 9 | \$13,526,625 |
| TOTAL | 31 | \$2,740,869 | 57 | \$20,623,738 | 88 | \$23,364,607 |

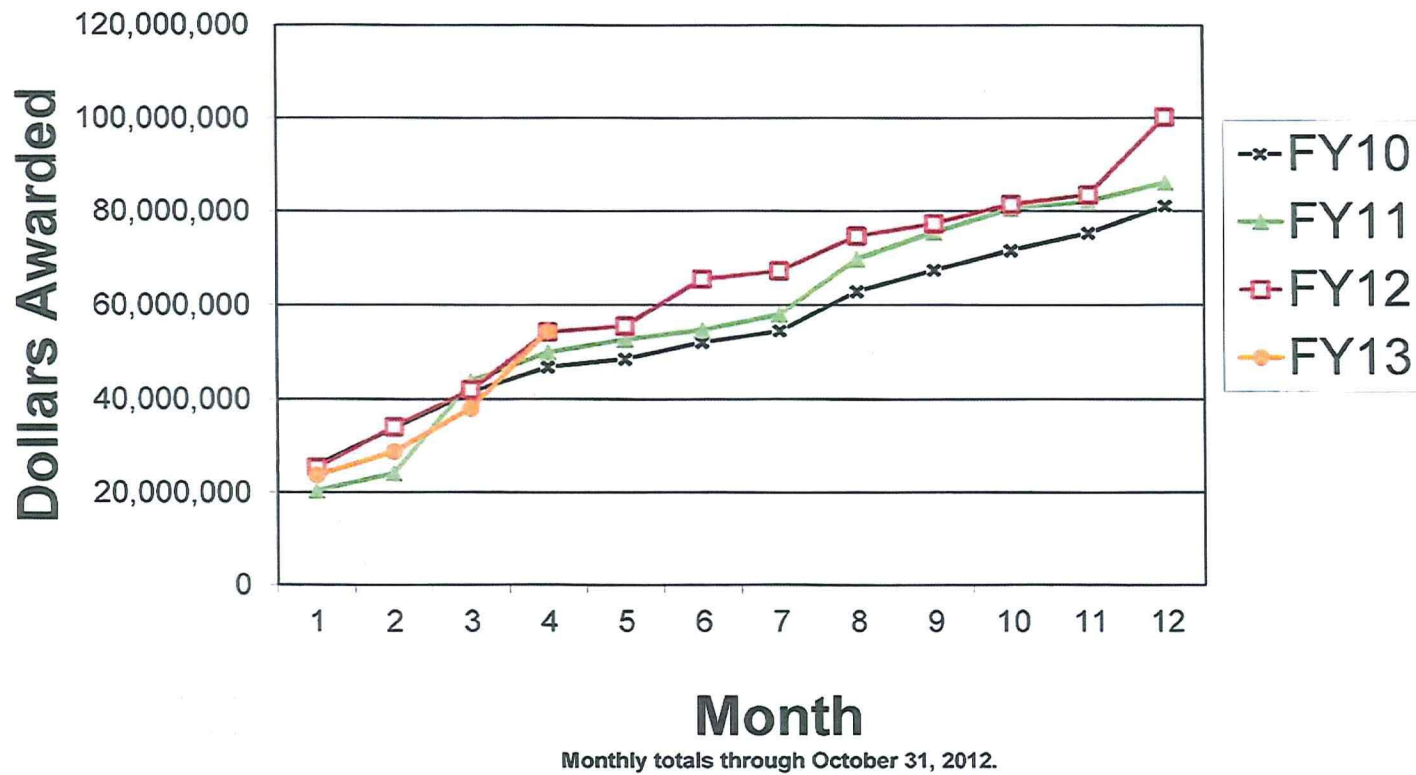
* Figures include total support for awards made since the October 2012 Board of Trustees Meeting.

** Ongoing awards include renewals, continuations, supplements and amendments.

This report was prepared by the Office of Research and Sponsored Programs.

WRIGHT STATE UNIVERSITY

Cumulative Grant and Contract Awards Comparison with Previous Three Fiscal Years



**December 14, 2012
Wright State University
Grants and Contracts Awarded
Since the October 12, 2012 Board of Trustees Meeting**

| Type | Title | Duration | Sponsor | Investigator(s) | Amount | Abstract |
|--|---|--------------------------|--|---|-------------|--|
| Boonshoft School of Medicine | | | | | | |
| Basic Research | | | | | | |
| Amendment Educ. Inst. Subagreement | The Genomic Psychiatry Cohort (GPC) | 06/04/2012 05/31/2013 | University of Southern California | Lehrer, Douglas S. | \$65,640 | The Principal Investigator will enroll individuals that meet diagnostic criteria for schizophrenia or schizoaffective disorder, depressive type, in the Genomic Psychiatry Cohort. |
| Continuation Federal Grant | Adiposity, Disease Risk Factors, and Lifetime Health | 07/01/2012 06/30/2013 | DHHS, National Institute of Child Health and Human Development (NICHD) | Czerwinski, Stefan Aleksander Siervogel, Roger M. Choh, Audrey Chumlea, W. Cameron Duren, Dana L. Lee, Miryoung | \$1,362,457 | This research will use both new and existing data from the Fels Longitudinal Study, a unique database that began in 1929 to study the development of body composition and associated disease risks across the lifespan. |
| Continuation Federal Grant | ACE Balance in the Cardiovascular Complication of Diabetes | 06/01/2012 05/31/2013 | DHHS, National Heart, Lung, and Blood Institute (NHLBI) | Morris, Mariana Elased, Khalid M. Chen, Yanfang | \$355,163 | The Principal Investigator will study the effect of fructose in dietary and genetic models of insulin resistant diabetes. |
| New Non-Profit Subagreement | Aerospace Physiology and Toxicology Research | 09/01/2012 08/31/2013 | Henry M. Jackson Foundation | Reo, Nicholas V. Raymer, Michael L. | \$225,100 | This proposal will include projects involving NMR-based metabolomics analyses of approximately 458 samples over the course of one year. |
| New Educ. Inst. Contract | Reconstructing Life History in Fossil Hominins | 06/01/2012 06/30/2013 | New York University | Seselj, Maja Duren, Dana L. | \$12,000 | The WSU researchers will collect data on dental development from jaw and teeth radiographs from the Fels Longitudinal study to investigate the relationship between dental development and somatic growth and development. |

December 14, 2012
Wright State University
Grants and Contracts Awarded
Since the October 12, 2012 Board of Trustees Meeting

| Type | Title | Duration | Sponsor | Investigator(s) | Amount | Abstract |
|--|--|--------------------------|---|--|-----------|---|
| Renewal Federal Grant | Mechanisms of Reciprocal Inhibition Development | 09/01/2012 08/31/2013 | DHHS, National Institute of Neurological Disorders and Stroke (NINDS) | Ladle, David R. | \$319,375 | This project will examine the development of a specific neurological circuit, the one responsible for reciprocal inhibition, with the intent of understanding how this process relates to cerebral palsy and other movement disorders. |
| Renewal Federal Grant | Deaf Off Drugs and Alcohol: Evaluating a Technology-Assisted E-Therapy Program for SUD Treatment | 10/01/2012 09/30/2013 | U.S. Department of Education | Wilson, Josephine F. Fraker, Susan M. | \$62,629 | The long-term goal of this proposal is to validate the effectiveness of the Deaf Off Drugs and Alcohol (DODA) Program in order to register the remote therapeutic protocol as an evidence-based practice in a nationally recognized registry such as the National Registry of Evidence-Based Programs and Practices (NREPP) or the Evidence-Based Practices (EBP) Substance Abuse Database. |
| Renewal Federal Grant | Molecular Imaging of Renal Angiotensin (1 -7) Forming Enzymes | 09/01/2012 08/31/2013 | DHHS, National Institute of Diabetes and Digestive and Kidney Diseases (NIDDK) | Grobe, Nadja Morris, Mariana Elased, Khalid M. | \$52,190 | This project uses the combination of a powerful new mass spectrometric imaging technique with integrative cardiovascular methods that will aid in understanding the complicated balance of the renin angiotensin system. |
| Renewal Educ. Inst. Subagreement | Muscle and Neuromuscular Junctions in Spinal Muscular Atrophy | 05/01/2012 04/30/2013 | Johns Hopkins University | Rich, Mark M. | \$40,975 | The Principal Investigator will continue to test weakness in spinal muscular atrophy believed to be caused by failure of signaling at the neuromuscular junction. |
| Supplement Non-Profit Subagreement | Genetics of Bone Structure and Metabolism | 08/01/2012 07/31/2013 | Texas Biomedical Research Institute | Towne, Bradford Czerwinski, Stefan Aleksander | \$58,788 | The Principal Investigator will assist SFBR in the training of medical technology specialists, oversee the reading of data images at WSU, compile image data, supervise data collection at the field clinic, and assist in the preparation, analysis, and presentation of findings. |

**Decemberber 14, 2012
Wright State University
Grants and Contracts Awarded
Since the October 12, 2012 Board of Trustees Meeting**

| Type | Title | Duration | Sponsor | Investigator(s) | Amount | Abstract |
|--------------------------------------|--|--------------------------|--|--|---------------|--|
| Supplement Industrial Contract | Biopsy Study | 10/26/2011 10/26/2013 | Devicor Medical Products, Inc. | Boivin, Gregory | \$26,576 | Wright State University will support the testing of biopsy devices. |
| Applied Research | | | | | | |
| Supplement Non-Profit Contract | Miscellaneous Awards Under DCOP Fiscal Agency Agreement | 06/01/2012 05/31/2013 | Dayton Clinical Oncology Program (DCOP) | Dunn, Margaret M. | \$20,063 | This amendment will allow supplemental funding for WSU to act as the FY12/13 fiscal agent for the Dayton Clinical Oncology Program (DCOP) for managing Non-NIH NCI funds per master agreement Addendum #1 having an effective date of May 12, 2005. |
| Instruction | | | | | | |
| New Industrial Grant | 2012 Surgery Post- Graduate Transplantation Symposium | 09/01/2012 09/30/2012 | Sanofi Aventis Inc. | Stevens, Rick Brian | \$5,000 | Funds will be used to support expenses for the 2012 Surgery Post-Graduate Transplantation Symposium. |
| Renewal State Contract | Adult Professorship of Community Psychiatry: Ohio Department of Mental Health | 07/01/2012 06/30/2013 | Ohio Department of Mental Health | Peirson, Ryan P. | \$15,000 | This funding will continue the Professorship of Community Psychiatry partnership with the Ohio Department of Community Health to improve the quality of clinical services in the region and enhance the training programs in public sector psychiatry. |
| Supplement Federal Grant | Aerospace Medicine Training in the Era of Expanding Human Space Flights Beyond ISS and LEO | 02/08/2012 09/30/2012 | National Aeronautics and Space Administration | Sahiar, Farhad | \$65,000 | Funding will provide continued support for the training of residents in Aerospace Medicine. |
| Public Service | | | | | | |
| New Non-Profit Contract | Mental Health/Medical Integration Project | 08/01/2012 08/31/2013 | Health Foundation of Greater Cincinnati | Kinzeler, Nicole Wilson, Josephine F. | \$102,078 | SARDI staff will serve as external evaluators for the project. |

**December 14, 2012
Wright State University
Grants and Contracts Awarded
Since the October 12, 2012 Board of Trustees Meeting**

| Type | Title | Duration | Sponsor | Investigator(s) | Amount | Abstract |
|------------------------------------|--|--------------------------|--|----------------------------------|---------------|---|
| New Educ. Inst. Subagreement | MEDTAPP Pediatric Telepsychiatry Pilot Study | 07/01/2012 06/30/2013 | Ohio State University | Wilson, Josephine F. | \$84,180 | The SARDI team will work with state sponsors, designated Pediatric Psychiatry Networks Faculty, and remote practice sites to develop the study design, and to provide information technology and implementation assistance to the PPN Faculty and the practice sites. |
| New State Subagreement | Evaluation Report for Healthier Ohio School Challenge Team Nutrition Projects | 07/01/2012 06/30/2013 | Ohio Department of Education | Orlowski, Marietta A. | \$5,000 | The PI will follow-up with 20 schools who were awarded mini-grants to collect process and outcome measures, as available. |
| Renewal Federal Grant | Healthy Brothers - Healthy Sisters | 09/30/2012 09/29/2013 | DHHS, Substance Abuse and Mental Health Services Administration (SAMHSA) | Ford, JoAnn Williams, Carlton | \$447,275 | The goal of this project is to accomplish a critical mass of measurable objectives that will significantly decrease risk for substance abuse and HIV/AIDS in the high-risk segment of Dayton and Montgomery County's African American population. |
| Renewal Federal Grant | Our Women's Health Promotion Project (OWHPP) | 09/30/2012 09/29/2013 | DHHS, Substance Abuse and Mental Health Services Administration (SAMHSA) | Ford, JoAnn Williams, Carlton | \$335,333 | The project goal is to prevent the impact of HIV/AIDS and substance abuse among targeted African American women, ages 18 or older, living in Dayton, Ohio's Public Housing projects. |
| Renewal Federal Grant | Substance, Testing, and Education Program Using Prevention (STEP-UP) | 09/30/2012 09/29/2013 | DHHS, Substance Abuse and Mental Health Services Administration (SAMHSA) | Williams, Carlton | \$299,999 | This program will be guided by the Strategic Prevention Framework to build state of the science substance abuse and HIV prevention capacity and to prevent the onset and reduce substance abuse and HIV infection among African American college students. |

**December 14, 2012
Wright State University
Grants and Contracts Awarded
Since the October 12, 2012 Board of Trustees Meeting**

| Type | Title | Duration | Sponsor | Investigator(s) | Amount | Abstract |
|----------------------------------|--|--------------------------|--|---|---------------|--|
| Renewal Federal Grant | Fifty-Plus Prevention Project (F3P) | 09/30/2012 09/29/2013 | DHHS, Substance Abuse and Mental Health Services Administration (SAMHSA) | Williams, Carlton Wilson, Josephine F. | \$299,690 | This SARDI program will include both broad-based as well as highly targeted educational and interventional strategies intended to reduce substance abuse and HIV risks among older county residents. |
| Renewal State Subagreement | Telemedicine Project | 07/01/2012 06/30/2013 | Ohio Department of Developmental Disabilities | Dunn, Kristen K. Wilson, Josephine F. | \$49,968 | This project will expand CAM's existing telepsychiatry program to serve individuals with Medicaid coverage with intellectual disability and co-occurring mental illness. At least 120 individuals will be enrolled in the program. The project will support the purchase and implementation of a health record software system that will provide web access to the individual, treatment team, family members and provider staff to coordinate comprehensive care. |
| Academic Support | | | | | | |
| Supplement State Grant | AHEC Support | 07/01/2012 06/30/2013 | Ohio Board of Regents | Cauley, Katherine L. | \$31,444 | OBR funds will be used by the Boonshoft School of Medicine to provide partial support for the Ohio Area Health Education Centers (AHEC) program in FY 2012/2013. |

**December 14, 2012
Wright State University
Grants and Contracts Awarded
Since the October 12, 2012 Board of Trustees Meeting**

| Type | Title | Duration | Sponsor | Investigator(s) | Amount | Abstract |
|--|--|--------------------------|-------------------------------------|--|---------------|---|
| College of Education and Human Services | | | | | | |
| Noncredit Instruction | | | | | | |
| Continuation Federal Grant | The Wright Intervention | 10/01/2012 09/30/2013 | U.S. Department of Education | Keener, Catherine D. McIlvenna, Noeleen | \$100,000 | The purpose of this project is to prepare special education candidates within the proposed Ohio grade band area of (5-9) with expertise in two core content areas, as well as being well-prepared to serve children with high incidence disabilities. |
| Basic Research | | | | | | |
| New Educ. Inst. Grant | Ohio K12 Student Growth Measures for Untested Grades and Subjects | 05/29/2012 06/30/2014 | Ohio State University | Franco, Suzanne Lindsey, Jill L. | \$121,220 | The research will focus on Race to the Top participating LEAs that are piloting value-added measures in 2012-2014, both as diagnostic data for school improvement and effectiveness measures for educator evaluations. |
| Public Service | | | | | | |
| Continuation Educ. Inst. Grant | Reading Recovery: Scaling Up What Works | 10/01/2012 09/30/2013 | Ohio State University | Lyon, Anna | \$49,000 | WSU will serve as a university training center for Ohio State University's i3 grant: Reading Recovery: Scaling Up What Works. |
| Student Aid | | | | | | |
| New Educ. Inst. Agreement | Clark State Community College Internship | 08/20/2012 05/04/2013 | Clark State Community College | Lindsey, Jill L. Risacher, Joanne | \$18,345 | Funds will be used to support stipend and tuition for a graduate internship at Clark State. |

**December 14, 2012
Wright State University
Grants and Contracts Awarded
Since the October 12, 2012 Board of Trustees Meeting**

| Type | Title | Duration | Sponsor | Investigator(s) | Amount | Abstract |
|--|---|--------------------------|---|---------------------------------------|-----------|---|
| College of Engineering and Computer Science | | | | | | |
| Basic Research | | | | | | |
| Amendment Industrial Subagreement | Modeling the Current Distribution and Optimizing the Design of Transcranial Direct Current Stimulation Electrodes | 07/09/2011 07/04/2013 | InfoSciTex | Dong, Haibo Miller, Aaron N. | \$14,966 | The WSU researchers will address shortcomings with novel improved electrode modeling and design. |
| Amendment Industrial Subagreement | Observe Pattern of Life and Predict Individual Behavior | 12/12/2011 06/28/2013 | Systems Research and Applications International | Jean, Jack S. | \$11,679 | The WSU researcher will support research and development activities for the Air Force Information Operations/Cyber Exploitation Research Program. |
| New Federal Grant | CPS: Synergy: Collaborative Research: Methodologies for Engineering with Plug- and-Learn Components: Formal Synthesis and Analysis Across Abstraction Layers | 10/01/2012 09/30/2015 | NSF, Miscellaneous | Gallagher, John C. | \$340,000 | The researchers will introduce the concept of plug-and-learn components as a means of describing engineered systems that mix traditional hierarchy with self-configuration. |
| New Industrial Contract | Research and Development of Citation Mapping Feature Vector | 10/01/2012 09/30/2013 | Vedainfo Inc. | Kidambi, Phani | \$110,950 | The WSU researcher will explore the various citation mapping features available in different domains and build a new citation map feature system. |
| New Industrial Subagreement | Algorithms for Dismount Detection in Synthetic Aperture Radar | 05/21/2012 12/31/2013 | Matrix Research & Engineering | Rigling, Brian D. Fogle, Orelle R. | \$75,000 | WSU researchers will work with the sponsor on the improvement and automation of signal processing techniques developed during the SBIR Phase I. |

**December 14, 2012
Wright State University
Grants and Contracts Awarded
Since the October 12, 2012 Board of Trustees Meeting**

| Type | Title | Duration | Sponsor | Investigator(s) | Amount | Abstract |
|------------------------------|--|--------------------------|---|---------------------------------------|---------------|---|
| New Industrial Subagreement | Separability and Stability Analysis of Laser Vibrometry Signals | 09/01/2012 09/01/2014 | Science Applications International Corporation (SAIC) | Shaw, Arnab K. | \$53,348 | The researcher will explore several concepts related to remote sensor vibrometry and its use in target identification. |
| New Industrial Subagreement | Passive Multistatic Radar Modeling | 05/21/2012 12/15/2012 | Matrix Research & Engineering | Rigling, Brian D. Fogle, Orelle R. | \$50,000 | WSU researchers will work with sponsor on performance prediction for multistatic radar systems, and signal processing algorithm design and implementation. |
| New Industrial Subagreement | ISAR for Terrestrial Targets | 06/01/2012 03/01/2013 | Etegent Technologies, Ltd. | Rigling, Brian D. | \$49,949 | WSU researchers will develop a MATLAB simulation for range-doppler returns from moving targets, and implement an algorithm for moving target focusing. |
| New Industrial Contract | Tool Developments for Reliability Based Design Optimization and Engineering Data Analytics | 08/01/2012 07/31/2013 | Caterpillar, Inc. | Bae, Ha-Rok | \$49,900 | The WSU researcher will develop tools that are tailored to the day-to-day complex and large-scale designs at Caterpillar. |
| New Industrial Subagreement | Wide-Area Motion Imagery and Radio Frequency Compressive Sensing Applications | 06/27/2012 01/21/2013 | Scientific Systems Company, Inc. | Rigling, Brian D. | \$30,000 | WSU will develop sequential techniques for compressive sensing processing of persistent sensor data with emphasis on change detection performance and data compression. |
| New Educ. Inst. Subagreement | Thin Film Semiconductor Characterization and Fabrication | 09/01/2012 08/31/2013 | University of Dayton | Zhuang, Yan | \$28,032 | WSU researcher will explore the characterization of thin film semiconductor materials and the fabrication of semiconductor testing structures. |
| New Industrial Subagreement | Design and Fabrication of an Exhaust Driven Fan for Micro-Jet Engines | 09/01/2012 07/15/2013 | Universal Technology Corporation | Roberts, Rory A. | \$2,800 | The purpose of this project is to design and fabricate an exhaust driven fan (EDF) for a JetCat P80SE gas turbine engine. |

**December 14, 2012
Wright State University
Grants and Contracts Awarded
Since the October 12, 2012 Board of Trustees Meeting**

| Type | Title | Duration | Sponsor | Investigator(s) | Amount | Abstract |
|--|---|--------------------------|--------------------------------|------------------------|---------------|---|
| Supplement Industrial Subagreement | T040: LVC Sensors Integration for Data Fusion in Operations and Training | 11/16/2010 10/14/2013 | Ball Aerospace | Sheth, Amit | \$77,916 | As a subcontractor, WSU will perform research related to the fusion of mobile, social, and sensor data. |
| Instruction | | | | | | |
| Renewal State Grant | OSGC Campus Allocation Funds 2012-2013 | 09/01/2012 08/31/2013 | Ohio Space Grant Consortium | Mawasha, P. Ruby | \$3,000 | Ohio Aerospace Institute funds will be used to support College of Engineering and Computer Sciences students affiliated with the Ohio Space Grant Consortium. |

**December 14, 2012
Wright State University
Grants and Contracts Awarded
Since the October 12, 2012 Board of Trustees Meeting**

| Type | Title | Duration | Sponsor | Investigator(s) | Amount | Abstract |
|--|--|--------------------------|--|--------------------------------------|-----------|--|
| College of Liberal Arts | | | | | | |
| Basic Research | | | | | | |
| New Industrial Subagreement | Renewable Energy and Energy Efficiency Job Impact Study | 08/23/2012 01/31/2013 | ICF Incorporated, LLC | Dockery, Jane L. | \$127,369 | WSU will lead the survey methodology, design, and implementation for the study. |
| Instruction | | | | | | |
| Renewal State Subagreement | Child Welfare Workforce Professional Education Program | 07/01/2012 06/30/2013 | Ohio Department of Job and Family Services | Layne, Jo Ellen Brun, Carl F. | \$123,250 | WSU will continue to provide a special social work educational program for juniors and seniors who have signed an agreement requiring them to complete the program and to seek and accept an offer of employment in a direct client service or supervisory capacity from an Ohio public children services agency. After completion of the program and acceptance of the required employment, the student will receive partial tuition reimbursement. |
| Public Service | | | | | | |
| Amendment Other Gov't. Agreement | Comprehensive Neighborhood Initiative (CNI) | 05/15/2012 05/14/2013 | Montgomery County Family and Children First Council | Subban, Jennifer Dockery, Jane L. | \$23,225 | The long term goal of the CNI is to target two specific distressed neighborhoods and to transform these into neighborhoods of choice and connection in which families thrive and young people succeed. |
| New Non-Profit Grant | Engaging Prehistory through Genetic and Dental Variation among Kenya's Coastal Peoples | 04/01/2013 07/31/2013 | Wenner-Gren Foundation for Anthropological Research, Inc. | Hubbard, Amelia R. | \$4,968 | This engagement project will build on a 2010 Wenner-Gren supported dissertation project examining the relationships among four coastal Kenyan populations using genetic and dental samples from four contemporary coastal Kenyan populations. |

**December 14, 2012
Wright State University
Grants and Contracts Awarded
Since the October 12, 2012 Board of Trustees Meeting**

| Type | Title | Duration | Sponsor | Investigator(s) | Amount | Abstract |
|-----------------------------------|---|--------------------------|--------------------------------------|------------------------|---------------|---|
| Supplement Federal Contract | Efficiently Managing Your OLOI Project, Project Assessment, and Strategic Planning | 07/01/2011 06/30/2013 | Veterans Affairs Medical Center | Kennedy, Sandra D. | \$4,700 | Wright State's Center for Workforce Development and Labor Management Initiations will provide training to the Dayton VA and facilitate a customized curriculum in a highly interactive development program. |
| Student Aid | | | | | | |
| Amendment State Agreement | Public and Social Service Transportation Curriculum and Internship Program | 09/17/2012 06/30/2013 | Ohio Department of Transportation | Dustin, Jack L. | \$12,000 | These funds will continue to support an internship program to encourage entry of individuals into the public and social service transportation field. |

December 14, 2012
Wright State University
Grants and Contracts Awarded
Since the October 12, 2012 Board of Trustees Meeting

| Type | Title | Duration | Sponsor | Investigator(s) | Amount | Abstract |
|------|-------|----------|---------|-----------------|--------|----------|
|------|-------|----------|---------|-----------------|--------|----------|

College of Nursing and Health

Academic Support

| | | | | | | |
|---------------------------------------|--|--------------------------|--------------------------|-------------------------|----------|--|
| Supplement Industrial Agreement | Miami Valley Hospital Operating Agreement | 09/01/2011 12/31/2012 | Miami Valley Hospital | Mainous, Rosalie O'Dell | \$45,000 | Miami Valley Hospital provides financial and personnel resources to the WSU College of Nursing and Health to support educational opportunities for nursing students at the hospital. |
|---------------------------------------|--|--------------------------|--------------------------|-------------------------|----------|--|

Student Aid

| | | | | | | |
|-------------------------|--|--------------------------|---|-----------------|-----------|---|
| New Federal Grant | Advanced Nurse Education Traineeship 2012-2014 | 09/01/2012 06/30/2013 | DHHS, Health Resources and Services Administration (HRSA) | Curry, Donna M. | \$319,200 | This training grant provides stipends, books, and tuition support for nursing students enrolled in WSU's College of Nursing and Health graduate degree program. |
|-------------------------|--|--------------------------|---|-----------------|-----------|---|

**December 14, 2012
Wright State University
Grants and Contracts Awarded
Since the October 12, 2012 Board of Trustees Meeting**

| Type | Title | Duration | Sponsor | Investigator(s) | Amount | Abstract |
|---|--|--------------------------|---|--|-----------|--|
| College of Science and Mathematics | | | | | | |
| Basic Research | | | | | | |
| Amendment Federal Coop. Agrmt. | ADVANCE: Increasing the Participation and Advancement of Women in Academic Science and Engineering Careers | 09/01/2012 08/31/2013 | NSF, Miscellaneous | Goldstein, David L. Schneider, Tamera | \$538,151 | The aims of the LEADER project are to conduct a comparative analysis of climate for STEM women across institutions to identify best practices related to recruitment, retention, and advancement; to initiate gender schema and a campaign based on persuasion theory that will promote new norms of expectation and facilitate best practices; and to implement social contracts to transform the climate leading to recruitment, promotion and success of STEM women regionally. |
| Amendment Educ. Inst. Subagreement | Supporting Scientific Practices in Elementary and Middle School Classroom | 09/01/2012 08/31/2013 | Northwestern University | Kenyon, Lisa Orvik | \$68,380 | The researchers will follow student learning of scientific modeling, explanations, and argumentation at multiple education research sites. |
| Amendment Industrial Subagreement | Human-Machine Trust for Robust Autonomous ISR Systems | 07/02/2012 03/31/2015 | Systems Research and Applications International | Shebilske, Wayne L. | \$66,517 | The focus of this project will be to conduct research to investigate human-machine trust for robust autonomous Intelligence Surveillance and Reconnaissance (ISR) systems. |
| Amendment Industrial Subagreement | The Nature of Trust | 07/02/2012 03/31/2015 | Systems Research and Applications International | Schneider, Tamera | \$66,517 | The WSU PI shall provide support and expertise to complete a research program to respond vigorously to urgent needs for improved military capabilities with regard to the task order objectives to investigate indicators of trust and trustworthiness. |

**December 14, 2012
Wright State University
Grants and Contracts Awarded
Since the October 12, 2012 Board of Trustees Meeting**

| Type | Title | Duration | Sponsor | Investigator(s) | Amount | Abstract |
|---|--|--------------------------|--|--|-----------|---|
| Amendment Educ. Inst. Subagreement | Federal Sponsors - Mercury Analysis of Environmental Samples | 07/01/2012 12/31/2012 | Florida State University | Hammerschmidt, Chad R. | \$39,023 | The Principal Investigator will provide mercury analysis of environmental samples for various federal sponsors. |
| Amendment Educ. Inst. Subagreement | Non-Contact, THz Sensing of Corneal Hydration | 07/01/2012 06/30/2013 | University of California, Los Angeles (UCLA) | Brown, Elliott | \$28,984 | The WSU researcher will develop accurate electromagnetic models to accurately describe and predict the THz electromagnetic properties of corneas. |
| Continuation Educ. Inst. Subagreement | Remediation of Halogenated Aliphatic Hydrocarbons (HAHs) and Other Groundwater Pollutants: Biogeochemical and Microbiological Characterization of HAH Transformation Processes at WPAFB Wetland and Similar Aquatic Environments | 09/21/2012 09/20/2013 | Air Force Institute of Technology (AFIT) | Agrawal, Abinash | \$125,000 | A detailed analysis of the fate of dissolved halogenated aliphatic hydrocarbons (HAHs), particularly, chlorinated ethenes (CEs) in the contaminated groundwater flowing through the WPAFB constructed wetland is being studied. |
| New Federal Grant | Optimal Control of Quantum Systems: Transformative NMR and EPR Applications | 09/15/2012 08/31/2015 | NSF, Grants for Scientific Research | Skinner, Thomas E. | \$458,471 | This research will build upon prior NSF funded studies in the area of Nuclear Magnetic Resonance (NMR) spectroscopy. |
| New Federal Contract | 1550-nm Extrinsic- GaAs Photomixers, Arrays and Spectrometers | 09/28/2012 02/27/2013 | DoD, Army Research Office | Brown, Elliott | \$60,529 | Advancement of THz photoconductive source technology for improved sensitivity and portability of high-resolution THz spectrometers and related instrumentation. |
| New Industrial Subagreement | Bio Polymer Project | 10/01/2012 09/30/2013 | Universal Energy Systems, Inc. (UES, Inc.) | Kozłowski, Gregory Weaver, Kent Michael | \$38,544 | The WSU researchers will work on tasks related to Raman spectroscopy, gradient growth, and graphene growth. |

**December 14, 2012
Wright State University
Grants and Contracts Awarded
Since the October 12, 2012 Board of Trustees Meeting**

| Type | Title | Duration | Sponsor | Investigator(s) | Amount | Abstract |
|---|--|--------------------------|--|--|---------------|--|
| New Educ. Inst. Subagreement | Statistical Methods for Mapping Human Brain Development | 08/01/2012 04/30/2013 | New York University School of Medicine | Tarpey, Thaddeus | \$22,621 | The WSU researcher will be involved with the statistical development that will address the aims of the proposed research. |
| New Non-Profit Contract | ASV Travel Grant | 05/01/2012 09/30/2012 | American Society for Virology | Excoffon, Katherine Sharma, Priyanka Readler, James M. Yan, Ran | \$2,500 | Awarded funds will be used to offset travel costs for attendance at the American Society for Virology 31st Annual Meeting. |
| New Non-Profit Contract | ACS National Meeting Travel Grant FY2013 | 08/01/2012 09/30/2012 | Petroleum Research Fund - American Chemical Society | Underwood, Kirby A. Grossie, David A. | \$500 | The American Chemical Society (ACS) student chapter received a National Meeting Travel Grant for the 244th ACS National Meeting. |
| Renewal Industrial Subagreement | Visual Identification of Human Biosignatures via Pattern Recognition-Based Decision Making in Immersive Environments | 10/20/2011 10/20/2013 | InfoSciTex | Watamaniuk, Scott N. J. | \$36,500 | The research team will conduct several experiments aimed at determining the optimal methods for training subjects to quickly and accurately detect and interpret human anthropometric and biomechanical signatures indicative of certain behaviors of interest to the Air Force ISR community. |
| Renewal Non-Profit Contract | Establishing a Scientific Basis for Garlic Mustard Control and Eradication on Private Lands | 07/01/2012 06/30/2013 | Dairymen's, Inc. | Rooney, Thomas | \$12,500 | The main goal of this scientific research plan is to study the time and effort required to eradicate garlic mustard on private lands. |
| Supplement Educ. Inst. Subagreement | Civilian Aeromedical Evacuation Sustainment Training (CAEST) | 03/01/2012 04/30/2013 | University of Memphis (The) | Shalin, Valerie L. | \$46,130 | The aim of this project is to develop, implement, and evaluate an integrated training program using didactic and hands-on methods that will ensure effective interface between civilian and military operations in the event of a catastrophe requiring aeromedical evacuation. |

**December 14, 2012
Wright State University
Grants and Contracts Awarded
Since the October 12, 2012 Board of Trustees Meeting**

| Type | Title | Duration | Sponsor | Investigator(s) | Amount | Abstract |
|---|---|--------------------------|--|-------------------------------------|----------|--|
| Supplement Industrial Subagreement | Sirius Program | 09/29/2012 09/30/2013 | Applied Research Associates, Inc. | Flach, John M. Bennett, Kevin B. | \$40,000 | The WSU researchers will assist the Applied Research Associates team in the creation of experimental Serious Games to train participants and measure their proficiency in recognizing and mitigating the cognitive biases that commonly affect all types of intelligence analysis. |
| Supplement Foreign Contract | Analysis of Host Associations and Biogeography of Hematozoan Tozoan Parasites in South African Birds | 09/01/2011 10/30/2013 | University of Cape Town | Peters, Jeffrey L. | \$20,000 | The Principal Investigator will test for co-speciation between the parasitic species <i>Plasmodium</i> and <i>Haemoproteus</i> and South African birds, spatial differences in the distribution of different parasite lineages, and temporal differences in parasitic prevalence. |
| Supplement Educ. Inst. Subagreement | Dynamitron Use and Maintenance in Support of Collaborative Material Science Research | 04/13/2010 04/12/2015 | Air Force Institute of Technology (AFIT) | Farlow, Gary C. | \$500 | This CRADA defines the terms of agreement between Air Force Activity and WSU for the management and maintenance of the Dynamitron Electron Beam System (DEBS) to be used in research and education. |
| Applied Research | | | | | | |
| Supplement Industrial Contract | Laundry Sample Analysis | 02/01/1988 05/16/2017 | Procter & Gamble Company | Arlian, Larry G. | \$7,350 | The Principal Investigator will conduct an analysis of mite and allergen removal via machine washing. |
| Supplement Multiple Source Contract | Hall Effect Measurements | 12/10/2010 12/31/2012 | More Than One Source of Support | Look, David C. | \$2,700 | The Principal Investigator will conduct specialized electronic measurements on sponsor-supplied samples. |
| Supplement Multiple Source Contract | FTIR Analysis of Samples | 09/01/2011 08/31/2013 | More Than One Source of Support | Higgins, Steven R. | \$98 | The Principal Investigator will conduct Fourier transform infrared analysis of sponsor supplied samples. |

**December 14, 2012
Wright State University
Grants and Contracts Awarded
Since the October 12, 2012 Board of Trustees Meeting**

| Type | Title | Duration | Sponsor | Investigator(s) | Amount | Abstract |
|-----------------------|--|------------|---------------|--------------------|-----------|---|
| Public Service | | | | | | |
| Amendment | RDE-RAD: | 12/01/2008 | NSF, | Flach, John M. | \$302,207 | Ohio's STEM Ability Alliance (OSAA), a collaboration between the Dayton and Columbus metropolitan regions, will create an integrated program of proven interventions to reduce barriers (motivation and interest; opportunity; psychosocial; academic preparation and cognitive skills) for students with disabilities (SwD) to access Science, Technology, Engineering and Mathematics (STEM) careers. |
| Federal | Collaborative | 11/30/2014 | Miscellaneous | Gallagher, John C. | | |
| Grant | Research: Ohio's STEM Ability Alliance (OSAA): STEM Degrees and Careers for Ohioans with Disabilities | | | | | |

**December 14, 2012
Wright State University
Grants and Contracts Awarded
Since the October 12, 2012 Board of Trustees Meeting**

| Type | Title | Duration | Sponsor | Investigator(s) | Amount | Abstract |
|------|-------|----------|---------|-----------------|--------|----------|
|------|-------|----------|---------|-----------------|--------|----------|

Lake Campus

Instruction

| | | | | | | |
|-----------------------|--|--------------------------|--------------------------|--------------------|----------|--|
| New State Grant | Capital Appropriation House Bill 482 - Lake Campus | 07/01/2012 06/30/2014 | Ohio Board of Regents | Mathies, Bonnie K. | \$12,583 | These funds are for the purchase of instructional equipment for the WSU Lake Campus. |
|-----------------------|--|--------------------------|--------------------------|--------------------|----------|--|

**December 14, 2012
Wright State University
Grants and Contracts Awarded
Since the October 12, 2012 Board of Trustees Meeting**

| Type | Title | Duration | Sponsor | Investigator(s) | Amount | Abstract |
|-------------------------------------|---------------------------------|--------------------------|-------------------------------|-----------------|----------|--|
| Raj Soin College of Business | | | | | | |
| Employer Assistance | | | | | | |
| New Industrial Subagreement | WSU Mentor - Protégé Program | 07/09/2012 02/23/2013 | WBB, Inc. | Gregorich, Earl | \$90,000 | SBDC will provide business consultation services to Edaptive Computing. |
| New Industrial Contract | Emerging Leaders Program | 09/01/2012 12/01/2012 | Speedway SuperAmerica LLC | Munch, James M. | \$56,000 | WSU faculty will provide a customized product leadership program for the employees of Speedway SuperAmerica, L.L.C. |
| New Non-Profit Contract | High Rez Camera Market Study | 08/17/2012 09/10/2012 | Development Projects, Inc. | Williams, Scott | \$2,500 | WSU's Center for Innovation Management will update the information in a 2009 market study originally prepared for STAN Solutions on the High Rez Camera. |

**December 14, 2012
Wright State University
Grants and Contracts Awarded
Since the October 12, 2012 Board of Trustees Meeting**

| Type | Title | Duration | Sponsor | Investigator(s) | Amount | Abstract |
|------|-------|----------|---------|-----------------|--------|----------|
|------|-------|----------|---------|-----------------|--------|----------|

Universitywide

Public Service

| | | | | | | |
|----------------------|---|--------------------------|--|--------------------|---------|--|
| New Non-Profit Grant | Formation of Ohio College Testing Association (OCTA), a State Chapter of the NCTA | 08/06/2012 07/26/2013 | National College Testing Association, Inc. | Baumer, Michael L. | \$2,830 | An Ohio consortium of postsecondary institutions will use funds to launch inaugural activities to create the Ohio Chapter of the National College Testing Association. |
|----------------------|---|--------------------------|--|--------------------|---------|--|

Student Aid

| | | | | | | |
|----------------------------|---|--------------------------|------------------------------|------------------|--------------|---|
| Continuation Federal Grant | Wright State C-CAMPIS: Childcare Access Means Parents in School Program | 10/01/2012 09/30/2013 | U.S. Department of Education | Martin, Bryan M. | \$89,424 | The purpose of C-CAMPIS is to increase access to post-secondary education for low-income student parents. |
| Supplement Federal Grant | PELL Grant Program 2012/2013 | 06/01/2012 06/30/2013 | U.S. Department of Education | Barnhart, Amy | \$12,088,953 | These funds support PELL grants for students. |
| Supplement Federal Grant | Supplemental Educational Opportunity Grant Program (SEOG) 2012/2013 | 07/01/2012 06/30/2013 | U.S. Department of Education | Barnhart, Amy | \$3,111 | These funds support SEOG grants for students. |
| Supplement Federal Grant | PELL Grant Program 2011/2012 | 07/01/2011 06/30/2012 | U.S. Department of Education | Barnhart, Amy | \$2,589 | These funds support PELL grants for students. |

**Decemberber 14, 2012
Wright State University
Grants and Contracts Awarded
Since the October 12, 2012 Board of Trustees Meeting**

| Type | Title | Duration | Sponsor | Investigator(s) | Amount | Abstract |
|------|-------|----------|---------|-----------------|--------|----------|
|------|-------|----------|---------|-----------------|--------|----------|

VP for Curriculum and Instruction

Instruction

| | | | | | | |
|-----------------------|--|--------------------------|--------------------------|--------------------|-----------|--|
| New State Grant | Capital Appropriation House Bill 482 - Dayton Campus | 07/01/2012 06/30/2014 | Ohio Board of Regents | Sudkamp, Thomas A. | \$302,810 | These funds are for the purchase of instructional equipment for the WSU Dayton Campus. |
|-----------------------|--|--------------------------|--------------------------|--------------------|-----------|--|

Student Aid

| | | | | | | |
|--------------------------------|---|--------------------------|---------------------------------|---------------------|-----------|---|
| Continuation State Grant | Growing the STEMM Pipeline in the Dayton Region: Becoming an International Center of Excellence for Human Effectiveness/Human Performance | 07/01/2012 06/30/2013 | Ohio Board of Regents | Sudkamp, Thomas A. | \$989,366 | A collaborative consisting of WSU, Central State University, the University of Dayton, Wittenberg University, Clark State Community College, Edison Community College, Sinclair Community College, and Southern State Community College will use Choose Ohio First Scholarships to attract, retain, and graduate students in the STEMM disciplines. |
| Renewal State Grant | Upward Bound Summer Lunch Program | 06/08/2012 07/27/2012 | Ohio Department of Education | Dewberry, Brenda I. | \$3,637 | Funds to be used for the Upward Bound Lunch program. |

**December 14, 2012
Wright State University
Grants and Contracts Awarded
Since the October 12, 2012 Board of Trustees Meeting**

| Type | Title | Duration | Sponsor | Investigator(s) | Amount | Abstract |
|------|-------|----------|---------|-----------------|--------|----------|
|------|-------|----------|---------|-----------------|--------|----------|

VP for Research and Graduate Studies

Public Service

| | | | | | | |
|-----------------------------|---|--------------------------|----------------------------------|----------------|----------|---|
| New State Subagreement | FY2009 State Homeland Security Program (SHSP) | 08/01/2009 09/30/2012 | Ohio Emergency Management Agency | Smith, Jack E. | \$25,042 | Funds will be used to purchase equipment for State Homeland Security Ohio Mortuary Project. |
| Supplement Federal Contract | SSA Health IT Records | 12/28/2011 12/30/2012 | Social Security Administration | Wysong, Mark | \$300 | The Social Security Administration will pay \$15 per medical record requested and received from health IT partners. |

Academic Support

| | | | | | | |
|-------------------------|----------|--------------------------|-----------------------|----------------|-------------|--|
| Renewal State Agreement | OhioLINK | 07/01/2012 06/30/2013 | Ohio Board of Regents | Cook, Anita I. | \$1,525,000 | These funds cover the costs of database licenses and service fees provided to Ohio's University Libraries. |
|-------------------------|----------|--------------------------|-----------------------|----------------|-------------|--|

Total Funded \$23,364,607

IX. REPORTS OF THE COMMITTEES OF THE BOARD

A. Academic Affairs Committee

- Provost Report

Dr. Thomas Sudkamp, provost, reported that the College of Liberal Arts dean search is near completion. Four candidates visited campus during the month of November. The goal is to have the new dean in place by January 2013.

The Provost search is underway with first consideration in December.

- Student Experience from Start to Success

Ms. Barbara Bullock, assistant vice president, Institutional Research said that the university has been talking about student success for a long time, but until recently they only defined that success as new students returning for a second year. There is some logic in that approach; half of the students who leave before graduation leave before the second year. However, last year they started to look at everyone who received a bachelor's degree in 2010-2011 since graduation is the ultimate measure of success. They have begun to use that knowledge to provide data for student success measures to help students in a timely manner, before they get into trouble. She gave a brief overview of who starts here and who finishes.

Ms. Bullock said that generally when you think about the new students, it is generally new students coming straight from high school. However, they have come to realize that 1 out of 3 new to the university undergraduate students each fall are transfer students.

She also stated that Wright State awarded bachelor degrees to 2,013 students in the 2010-11 academic year. 55% of the students came in as new, direct from high school students, and the other 45% came in as transfer students. Nearly 90% of the students graduated within 6 years of beginning at Wright State, and the other 250 students graduated in 7 to 45 years.

- Scholarships and Recruiting

Dr. Jacqueline McMillan, vice president, Enrollment Management, presented the new merit-based scholarship program. Wright State will be automatically awarding merit-based scholarships to students

who qualify as the school revamps and expands its financial aid programs and puts an additional \$3 million into the effort next year.

Under the new program, Wright State student who maintain high grade point averages will be able to renew their \$1,500 or \$2,500 scholarships for the four years they are in college.

Wright State has two new scholarships for students coming directly from high school, and those who qualify and apply for admission for fall semester by March 1 will automatically receive the aid.

The Wright Promise Scholarship offers \$1,500 to high school students with a GPA of at least 3.0 and an ACT score between 22 and 26. The scholarship can be renewed if the student maintains a 2.5 GPA after earning 24 credit hours at Wright State.

The \$2,500 Raider Excellence Scholarship is awarded to high school students who meet two of three requirements: ranking in the top 10% of their graduating class, having an ACT score of at least 27 and having at least a 3.5 high school GPA. It can be renewed if the student maintains at least a 3.0 after earning 30 credit hours, according to Wright State.

Valedictorians or salutatorians of their high school classes with at least a 30 on their ACT will receive full in-state tuition that can be renewed if the students maintain at least a 3.0 GPA after earning 30 credit hours.

Valedictorians or salutatorians with less than a 30 on their ACT will receive half in-state tuition that can be renewed if the students maintain at least a 3.0 GPA after earning 30 credit hours.

The renewable scholarships are an incentive for students to stay on track to graduate.

- **OBR Initiatives**

Dr. Sudkamp reported to the Board that statewide remediation Free Standards were recommended by IUC presidents. At this point, the standards are still under consideration by community college presidents. The standards establish developmental course thresholds at 22 ACT for Mathematics and 18 ACT for English. These standards will impact placement of students at Wright State. 300-400 students will be placed in four credit hour mathematics classes who would

have been placed in remedial classes based on their placement exam scores. Potentially up to 200 students in developmental writing courses will be placed in four credit hour classes. New placement policies need to be developed to address these changes in remedial standards.

As part of the semester conversion, new courses are being designed to help students succeed and progress toward their degree:

- Writing stretch courses: 3-credit hour base, 4-credit hour base; two-term courses
- Math: funded a pilot stretch course last year as part of semester transition teaching innovation grants

On November 13th, the Complete College Ohio report was presented. The report contained twenty recommendations including a mandatory Campus Completion Plan that must be accepted by the Board of Trustees. No date was specified for this plan.

B. Finance and Audit

• Vice President' Report

Dr. Mark Polatajko, vice president, Business and Fiscal Affairs, reported on several activities that are currently underway within the Business & Fiscal Affairs Division.

SSI Consultation: The process convened in late September with a November deadline. It began with a call for ideas, opportunities, needs as related to current methodology. Wright State responded to prioritize Access and Affordability, aligned with its mission/vision, specifically at-risk students. The key areas of focus in the formula include a shift towards a higher proportion of funding rewarding degrees (50/50 split); a more accurate recognition of degree completion; alignment of the regional campus formula to that of the main campus; and, updated degree costs and number years averaging (2 instead of 3 vs. 5). The process is currently being evaluated by IUC Presidents. A decision by the SSI Process Committee is due November 21, 2012. It will be included in the Governor's Executive Budget Proposal of February 1, 2013.

\$25.3M Bond Pricing: On October 18, the University delivered a hugely successful bond pricing. This is a testimony to the support of

our Board and the commitment of the Wright State University Team. This resulted in an A1/Stable Outlook Moody's rating, a 2.9% All-in interest cost for a 20 year maturity and 100% of the bonds placed during the initial order period. The overall success of this pricing is a product of engagement and collaboration with WSU faculty, staff, retirees, alumni and students.

Food Service RFP: With the upcoming expiration of Sodexo and Ovations contracts, Wright State's strategy is to present the full contract opportunity to the supplier community in an innovative and comprehensive selection process. Seven prospective partners were selected. Each will participate in a half-day visioning session to establish the expectations and focus. The Request for Proposal will be issued in January with supplier responses and presentations scheduled for the early Spring. A resolution for this contract will be brought before the Board at the April meeting with an expected start date of July 1, 2013. This strategy will facilitate the transformation of our dining services to an all-inclusive hospitality services auxiliary and provide an optimal platform for profit generation as an alternate stream of operating revenue

Healthcare Benefits Strategy: The strategy involves launching a wellness initiative that provides a cost-savings incentive to employees for participating – currently offered in our 2013 open enrollment; communications, training and an enhanced web presence; leveraging our resources from the Boonshoft School of Medicine and the Wright State Physicians to provide on-site health clinics; competitively bidding the university's healthcare in the Spring of 2013 and a robust data analysis and forecast modeling to support decision-making and future program modification. As a result of this approach and shift in culture, Wright State not only can expect cost-containment, but a reduction in our annual healthcare budget.

Investment Advisor Meeting: At the suggestion of the Board, WSU has expanded the oversight of investments to include quarterly meetings with our investment advisors and selected fund managers. On October 23rd, the Team visited with FEG Investments at their offices in Cincinnati to discuss: market conditions and outlook; fund manager presentations from Cramer, Rosenthal, McGlynn and Dimensional Fund Advisors, and review the current investment policy and target allocations. Based upon this meeting, no changes to the policy or in fund manager allocations are proposed.

FY13 Budget Update: With respect to the Fiscal year 2013 budget, Dr. Polatajko and his Team continue to closely monitor spending activity and opportunities to right-size their operating spending. The President, Cabinet and the Council of Deans met October 10th to collaboratively identify opportunities for efficiency gains. Through four months of the budget year, they continue to evaluate all revenue and expense budgetary line items, and are very confident in their ability to manage this situation in a strategic manner.

- Mr. Jeff Ulliman, assistant vice president for Finance and University controller, reviewed the statement of net assets, revenues, expenses, and changes in fund balance and cash flows as reflected in the draft financial statements.
- Mr. Ulliman reported on Wright State University's compliance with the Board's financial policy and with the state's Senate Bill 6 review.
- Mr. Keith Ralston, associate vice president, Budget Planning and Research Analysis, reviewed the university's expenditures of \$250,000-\$499,999. No action was required.
- Mr. Ulliman shared the university's investment reports for September and October 2012.

C. Student Affairs Committee

- **Vice President's Report**

Dr. Dan Abrahamowicz, vice president for Student Affairs, detailed the planning progress beginning for the new Commons facility. Student input is being solicited on building amenities and once the program plan is established, the project will move to the selection of an architectural firm.

The Wright State Circle of Omicron Delta Kappa, the nation's most prestigious leadership honorary, inducted 27 students and 1 staff member on November 18. Dr. Dan Krane, biology professor and President of the Faculty, received special recognition as Honoris Causa for his work in support of students.

The Spirit of Giving 2012 projects are in full swing at the WSU Friendship Food Pantry. Ms. Simone Polk, assistant vice president

for Student Affairs, outlined the collaborative efforts of students in Ms. Karen Hayes classroom to raise funds and assemble holiday food baskets for 6 WSU student families in need. As the Food Pantry celebrates their founding almost 3 years ago, November 27th has been set aside as the date of the "Volunteer Appreciation Recognition" to extend thanks to the many volunteers for their countless hours of support.

Basketball season is off to a great start with the Women's team winning their first game and the Men's team with 3 wins.

Wright State's Madrigal Dinner kicks off the holiday season December 13-16th. This marks the 30th year for this entertaining musical collaboration.

- **Student Government Report**

Mr. Joseph Gibbons, Student Government president, outlined some of the issues Student Government is focused on this semester. With changes in federal regulations for financial aid, Student Government is recommending the implementation of an "early warning alert" for students receiving financial aid whose cumulative grade point average falls below a 2.25 GPA. This would trigger the need for an advising appointment to assist the student in correcting issues that are impeding their progress.

Student Government, following the Ohio Board of Regents recommendations for a smoke free campus, is currently not in favor of implementation, but would consider a broad university plan which includes enforcement.

Mr. Marc Tshimanyika, Student Government vice president, shared the recent statewide election results from the Ohio Student Government Association. Three Wright State students were selected for OSGA leadership positions. Wright State congratulates Jonas Kiessling, Spencer Brannon and Kyle Powell on their newly elected positions.

- **Updates**

Mr. Bob Grant, Athletic director, discussed the Athletic Department's commitment to three strategic goals. With academic excellence being an important goal, Wright State's athletes just completed their

thirtieth consecutive quarter maintaining a 3.0 GPA or better. The men's basketball and women's tennis teams individually received "Public Recognition Awards" from the NCAA for having a Division 1 Academic Progress Rate in the top 10% of all squads in their respective sports.

Committed to budgetary efficiency, Wright State's Athletic Department budgetary expenditures rank 7th out of the nine Horizon League schools and 11th out of eleven Ohio Division 1 state supported schools. Total athletic expenses represent 2.5% of WSU's total institutional expenses compared to the Division 1 institutional national average of 5.8%.

Wright State's reputation continues to be enhanced through athletic exposure on ESPN, in online and print formats, and winning season records due to the efforts of outstanding student athletes and competitive teams. With excellent facilities, strong coaching and "Raider Pride" in the fan base, Wright State Athletics is well positioned for the future.

Introduced to the Board were two new staff members, Mr. Bill Edwards (one of the most storied athletes in WSU history) and Ms. Brittney Whiteside (former WSU Women's Basketball great from 2003-2007). Mr. Edwards is returning his talent to Wright State as the assistant Strength and Conditioning Coach and Ms. Whiteside has accepted the position of special assistant to the Athletic Director.

- The Madrigal Dinner is truly a holiday tradition here at Wright State. Mr. Eric Corbitt, director of the Student Union, discussed the efforts that go into presenting this event which attracts about 300 guests for each of the four dinner performances. For thirty years this has been a remarkable and successful collaboration between the Music Department, Student Affairs and community groups. Area actors, musicians, entertainers, and Wright State's Chamber Singers make up the cast. Students Jeremy Bon and Brittany Vanderveen, both music education majors and Madrigal performers, reflected on what the performing experience means to them. Besides being fun, they view it as an opportunity to enhance their music education outside the classroom and a chance to bring happiness to people at the same time.

C. Student Trustees' Report

Ms. Anne Reagan reported on some of the activities on campus.

- Students are busy taking finals and some gearing up for graduation on Saturday.
- Student Government and student organizations have been very active on campus recently passing resolutions to improve student drivers and student pedestrian safety by modernizing some of the crossing walks. The resolutions were approved.
- Ms. Reagan congratulated all the students graduating tomorrow and is glad to support them in their life venture.

D. Faculty President's Report

Dr. Krane updated the Board on some of the plans the Faculty Senate has the upcoming semester.

- There will be 4 senate meetings in the spring semester starting in January.
- The January meeting will begin with a presentation by Dr. Sweeney on the strategic planning process.
- An ad hoc committee will present their findings on a first-year seminar program that is aimed at increasing incoming student – faculty relations.
- Recommendations from our Undergraduate Curriculum and Policies Committee regarding a missed class policy with implications for student athletes, military or other legal obligations.
- Recommendations from the Undergraduate Curriculum and Academic Policy Committee about standard definitions for things such as what constitutes a program, a minor and a certificate.
- At the February meeting – the Ad Hoc Committee for Service Learning & Undergraduate Research will report on their recommendations for developing a 3-year plan.
- A new ad hoc committee has been tasked with making recommendations regarding a smoke free policy.
- In March, the Senate will hear from the Ad Hoc Committee on Student Recruitment to better ascertain ways to better engage faculty in obtaining students interest and attention.
- The Building & Grounds Committee will have recommendations for the signage at Wright State.
- There will also be a report from an ad hoc committee that has been tasked with developing a 3-year plan to better prepare high school students for college.

- At the April meeting, Dr. Robert Fyffe will report on the research initiatives that are underway at Wright State.

X. PRESENTATION AND POLICY DISCUSSIONS

Dr. Rosalie Mainous
Dean
College of Nursing & Health

Overview of the Disaster Preparedness & Response Certificate Program

Dr. Rosalie Mainous, dean of the College of Nursing & Health gave a short overview of a new venture – the Disaster Preparedness & Response Certificate Program. This is a joint entrepreneurial venture between the College of Nursing & Health's Nursing Institute and the National Center for Medical Readiness. This program is being designed to meet a national need, serve a large customer base, and cover its own cost.

XI. UNFINISHED BUSINESS

None

XII. NEW BUSINESS

- A. Next Committee Day – February 1, 2013
- B. Next Board Meeting – Executive Session, February 14, 2013
Public Session, February 15, 2013.
- C. Lake Campus Regional Summit, February 22, 2013
- D. President's Lecture Series will present Neil deGrasse Tyson, March 7, 2013,
7 p.m., Apollo Room.

XIII. ADJOURNMENT

The meeting adjourned at 9:40 a.m.

XIV. APPENDIX – WRITTEN REPORTS

- A. Advancement Report
- B. Building & Grounds Report
- C. Communications & Marketing Report
- D. Enrollment Management Report
- E. Multicultural & Community Engagement Report
- F. Research & Sponsored Programs Report

**WRIGHT STATE UNIVERSITY
BOARD OF TRUSTEES**

**Advancement Committee Report
November 2012**

1. Alumni Relations Report
2. Wright State Foundation Financial Report
3. Development Report
4. Comprehensive Campaign Report

Advancement Committee Report

Alumni Relations Report

November 2012

1.) Recent Alumni Updates

- We officially opened **Rockafeld Alumni Center** with a ribbon cutting homecoming weekend. Some of the features of the building include a VIP guest suite capable of housing people overnight, a library with artifacts dating back to 1965 and every magazine ever produced, and increased versatility in space usage with some minor improvements.
- The 1st **homecoming** to focus heavily on alumni programming was a huge success with over 600 participants in the various activities throughout the weekend. Nearly 25% of the alumni in attendance had never attended a WSU alumni event before.
- The spring **membership campaign** came back with an impressive 3% return rate. National averages for successful campaigns average a little over 1%. A **fall membership** campaign will be launched in mid-November 2012.
- Our annual **scholarship appeal**, launched in July, has netted over \$40,000 towards the five scholarships related with the Association.
- The **Alumni Association financials** are looking much brighter after running in the deficit for years and dipping into the rainy day fund. This calendar year revenues are up more than expected and expenses down. While the budget may not balance this year, the deficit has been cut by more than 50%.

2.) Future Alumni Plans

- A student recruitment postcard campaign is planned for early 2013 where alumni write postcards to accepted, but not yet committed students, encouraging them to choose Wright State.
- A student referral website recently launched and marketing, aimed at encouraging alumni to refer students to Wright State, started and will continue through spring 2013.
- The Alumni Association officers will change over on January 1, 2013 with Carolyn Wright as President, Deb Downing as Vice President, Cheryl Garret as Treasurer, and Tony Alexander as Secretary.

3.) Upcoming Activities

- November 16 - Alumni Zone Men's basketball home opener
- November 28 - A Night at the Museum with WSU alumni - WPAFB
- January 5, 2013 - Graduates of the Last Decade event at basketball game
- January 5, 2013 - Beer Tasting
- January 25-26, 2013 - Reunion weekend
 - College Outstanding Alumni Awards
 - Rowdy Gras
 - Blast from the Past (class year reunion)
- April 6, 2013 - ArtsGala
- April 15-20, 2013 - Senior Week
- August 5-12, 2013 - WSU alumni tour to Alaska
- October 17-25, 2013 - WSU alumni tour to Italy

Advancement Committee Report

Wright State University Foundation Report

November 2012

Financial markets were kind to the Foundation's portfolios during the first quarter of fiscal year 2013. The endowment portfolio ended the quarter at \$71.4 million, up 3.8% (net of fees) for the period. The portfolio's composite index was 4.1%. The one-, three- and five-year returns for the portfolio were 14.0%, 9.6% and 1.7%, respectively. Only the one-year return did not exceed its benchmark. The portfolio's allocation to distressed debt (structured credit) continues to be overweight due to the strong performance of this asset class. All other classes were within target allocations at September 30th. Overall, alternative investments are underweighted due to the fact that our private equity investment is not yet fully capitalized.

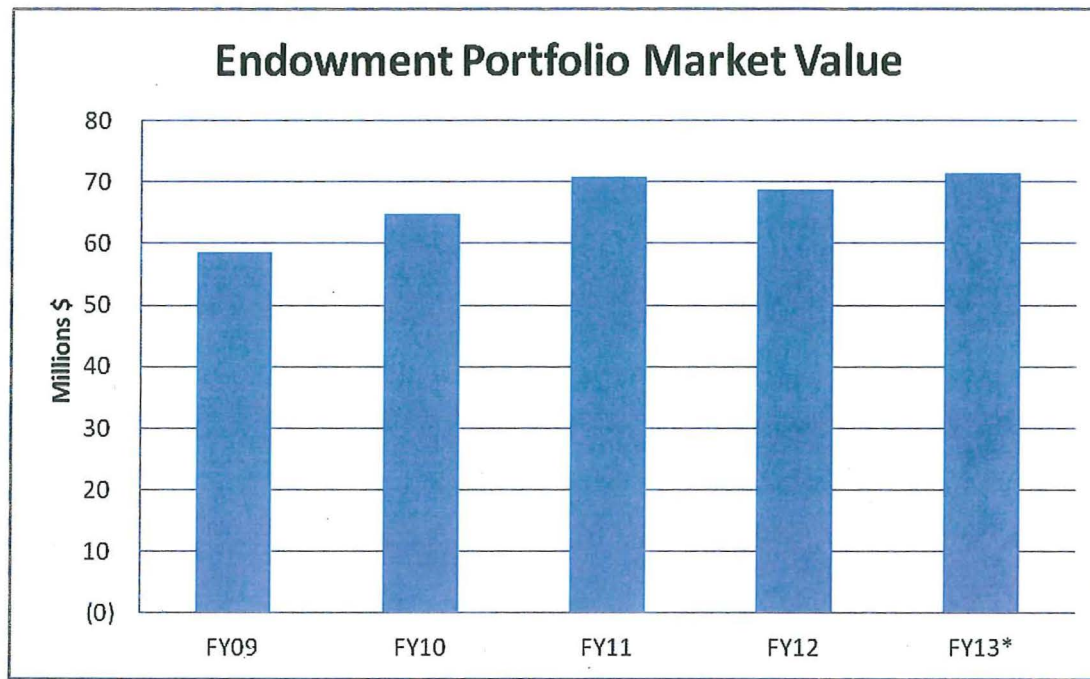
The Foundation's Investment Committee has been disappointed with the returns, both relative and absolute, on its hedge fund of funds. After investigating an alternative fund of funds, the Committee decided to reallocate half of the current distribution to the new hedge fund of funds with the other half remaining in the current hedge fund of funds. The intent of the change is to enhance the return from our hedge fund allocation, thus boosting the overall return of this underperforming asset class. In conjunction with this reallocation, the distressed debt investment will be rebalanced back to its target percentage. Any excess allocation from these changes will be invested in the portfolio's discretionary assets.

The Foundation's current endowment target allocation, actual allocation and market values as of September 30, 2012, are presented below:

Endowment Portfolio Composition

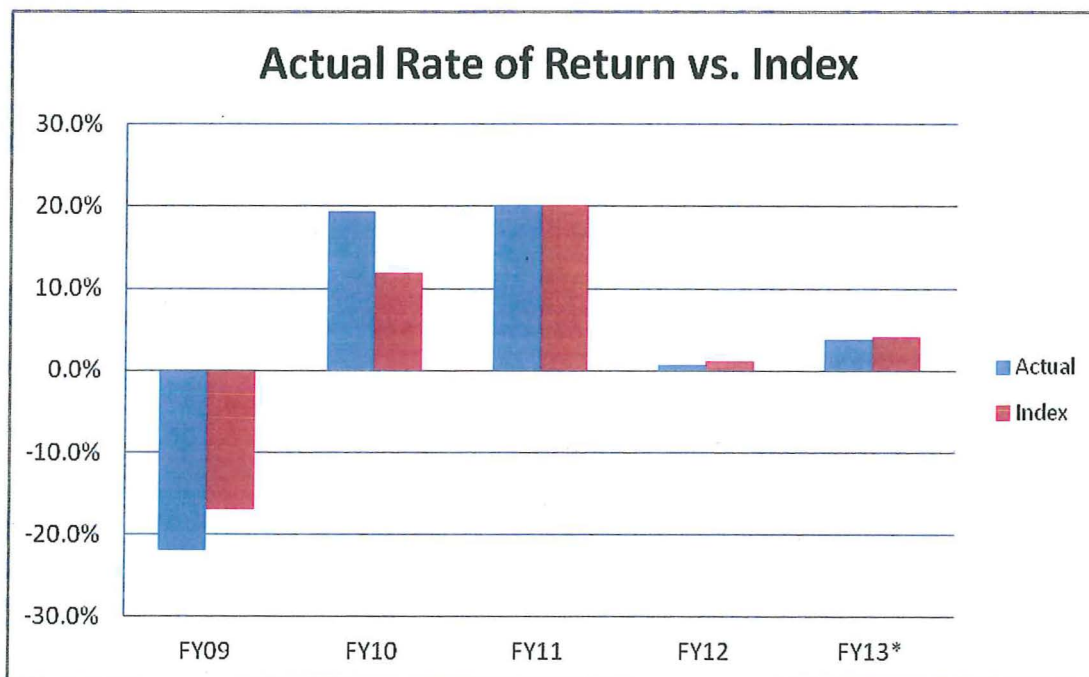
| Asset Class | Target Allocation | Actual Allocation | Market Value September 30, 2012 |
|-----------------------|--------------------------|--------------------------|--|
| Equity | 46% | 45% | \$32,387,283 |
| Fixed income | 30% | 31% | 21,906,207 |
| Hedge funds | 13% | 15% | 10,671,023 |
| Private equity | 8% | 2% | 1,552,920 |
| Structured credit | 3% | 7% | 4,853,991 |
| Cash & accrued income | 0% | 0% | 2,532 |
| Totals | 100% | 100% | \$71,373,956 |

Endowment Value



* To September 30, 2012

Endowment Historical Rates of Return

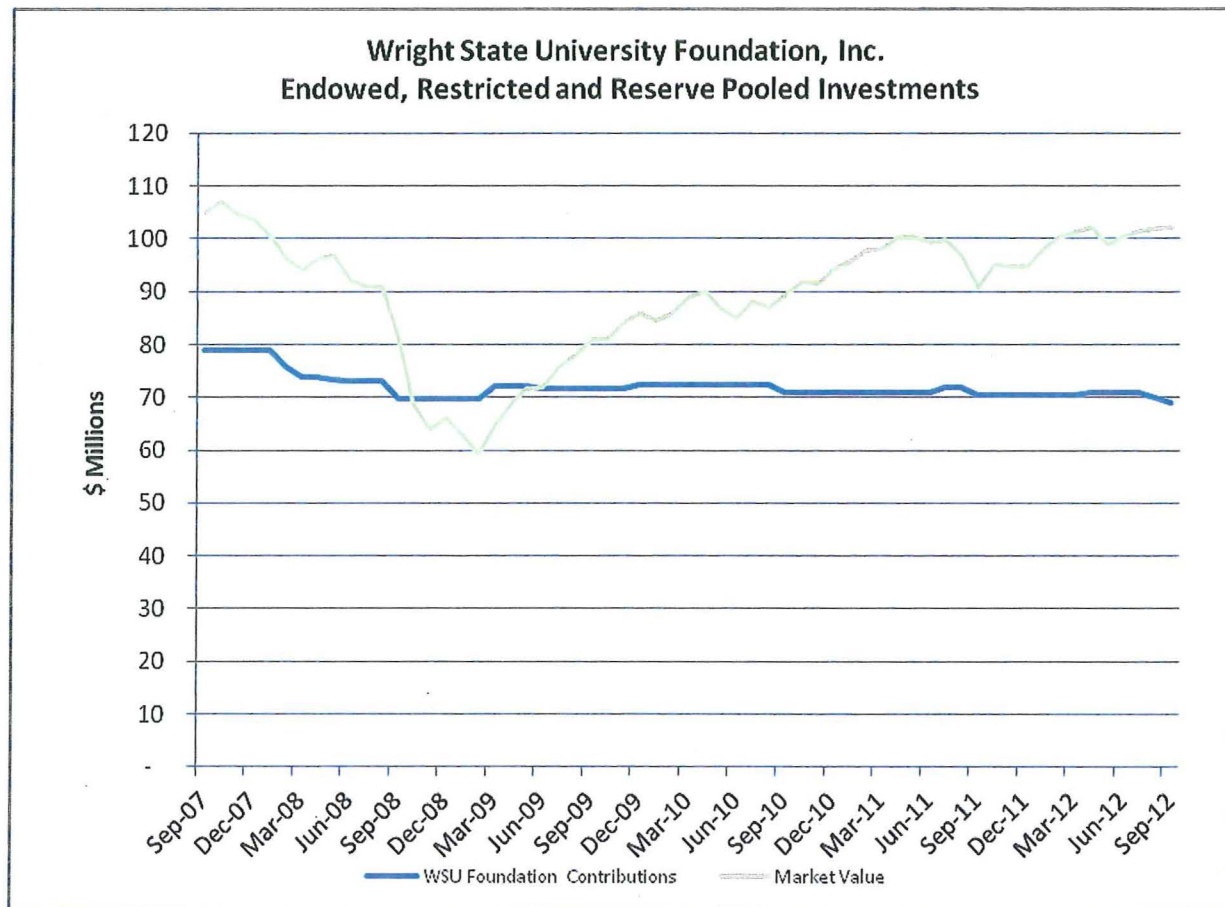


* To September 30, 2012

Current index composed of Russell 1000 (20.2%), Barclays US Aggregate Index (15.0%), MCSI All Country World Ex US Index (13.5%), Barclays Capital 1-5 Yr US TIPS Index (14.1%), HFR FOF Diversified (14.1%), Russell 2000 (5.8%), 50%

S&P 500/50% Barclays 10 Yr Trea BW (3.9%), BOFA ML US HY Master II Index (3.9%), JPM EMBI Global Diversified (2.9%), DJ Wilshire Resi (3.3%), SOF Structured Credit Fund (3.3%).

All Portfolios Value vs. Contributions



WRIGHT STATE UNIVERSITY FOUNDATION, INC.
Fiscal Year 2012 to Date through October 31, 2012

| FISCAL YEAR-TO-DATE | FY2013 | |
|-------------------------------|--------------|--------------------|
| | DONORS | DOLLARS |
| Alumni | 1,181 | \$427,982 |
| Corporations | 103 | 397,164 |
| Foundations and Organizations | 25 | 214,479 |
| Friends | 807 | 322,549 |
| TOTAL CASH RECEIPTS | 2,116 | \$1,362,174 |
| Gifts-in-kind | 32 | 10,817 |
| TOTAL RECEIPTS | 2,148 | \$1,372,991 |

| FISCAL YEAR-TO-DATE | FY2012 | |
|-------------------------------|--------------|--------------------|
| | DONORS | DOLLARS |
| Alumni | 1,066 | \$156,425 |
| Corporations | 102 | 464,523 |
| Foundations and Organizations | 28 | 152,752 |
| Friends | 907 | 330,956 |
| TOTAL CASH RECEIPTS | 2,103 | \$1,104,656 |
| Gifts-in-kind | 40 | 13,516 |
| TOTAL RECEIPTS | 2,143 | \$1,118,172 |

| FISCAL YEAR-TO-DATE | PCT. CHANGE | |
|-------------------------------|-------------|------------|
| | DONORS | DOLLARS |
| Alumni | 11% | 174% |
| Corporations | 1% | -15% |
| Foundations and Organizations | -11% | 40% |
| Friends | -11% | -3% |
| TOTAL CASH RECEIPTS | 1% | 23% |
| Gifts-in-kind | -20% | -20% |
| TOTAL RECEIPTS | 0% | 23% |

WRIGHT STATE UNIVERSITY FOUNDATION, INC.
Report of Total Private Support By Unit
Fiscal Year 2012 to-Date through October 31, 2012

| UNIT | FY 2013 TOTAL PRIVATE SUPPORT | FY 2012 TOTAL PRIVATE SUPPORT |
|---|--|--|
| Boonshoft School of Medicine | \$214,505 | \$328,337 |
| College of Education and Human Services | 51,975 | 29,388 |
| College of Engineering and Computer Science | 132,813 | 150,314 |
| College of Liberal Arts | 97,708 | 145,423 |
| College of Nursing and Health | 131,088 | 36,953 |
| College of Science and Math | 239,050 | 32,602 |
| Curriculum and Instruction | 4,624 | 19,556 |
| Enrollment Management | 27,646 | 644,885 |
| Intercollegiate Athletics | 1,954,850 | 205,659 |
| Lake Campus | 9,955 | 72,994 |
| Other | 182,185 | 97,788 |
| Raj Soin College of Business | 21,501 | 585,875 |
| School of Professional Psychology | 2,268 | 435 |
| Student Affairs | 38,613 | 120,432 |
| University College | 50 | 0 |
| University Libraries | 8,210 | 15,112 |
| TOTALS | \$3,117,041 | \$2,485,753 |

Advancement Committee Report

Development Report

November 2012

Campus Scholarship & Innovation Campaign (CSIC)

Wright State's Faculty, Staff, and Retiree Campaign

- Total Dollars (as of 11/6/12) = \$462,166 (includes \$27,500 from WSU Physicians)
 - Last year's end of year total was *\$430,823
- Total Participation (as of 11/6/12) = 49% participation
 - Last year's end of year participation was 50%. We only need 30 more full-time faculty & staff donors by Dec. 31 to reach the 50% participation goal.
 - Annual Giving has reached out, and will continue to reach out to faculty and staff who gave last year, but not yet this year.

*Due to the change in an anticipated gift of \$40,000 to \$27,500, this dollar amount is lower than the previously recorded FY11 CSIC total of \$443,323.

Phonathon (as of 11/5/12)

- As of week 11, the phonathon has raised nearly \$60,000 from alumni and parents of current students.
- Acquired 333 new donors
- Student callers are right on track with their participation goal of 23%, as the current participation rate is 23%.

Student Development Officer

Our new pilot program for the Student Development Officer (SDO) initiative continues to provide results that will be further analyzed by the Office of Annual Giving. Our SDO, David James, has been contacting a pool of College of Engineering & Computer Science (CECS) alumni in a more personalized approach. When comparing our SDO stats against the traditional calling stats for CECS, the following highlights have been identified:

- David has logged more talk hours, which means he's having better conversations with the alumni, ultimately building better relationships.
- His matching gift amount and rate is above the traditional calls for CECS.
- David's average gift is higher than the traditional calls for CECS.

- David's upgrade rate is nearly double the upgrade rate for the traditional calls.
- David is getting more people to fulfill their gifts right away via credit card.
- David continues to have quality calls. The Assistant Director of Annual Giving – phonathon has been monitoring his phone calls and has identified many occasions where alumni were not interested in talking, but David was able to find something of interest to talk to them about, and turn the call around.
- Through his conversations, David has built his own professional network and has had some individuals request to connect with him outside of the phonathon to discuss future opportunities.

Direct Mail

- Raider Club appeal dropped on 10/2/12
 - Has already brought in \$19,790 in just over 30 days.
 - Last year's appeal brought in a total of \$24,155 after a full year of tracking.
 - The 30 day donor count is 50
 - Last year's total donor count was 65
- Fall Appeal dropped on 11/6/12
 - Annual Giving has begun tracking responses and will report on the result in the next report.

Advancement Committee Report
Comprehensive Campaign Update
Changing Lives
November 2012

Campaign Activity

- The second campaign cabinet meeting was held on November 2, 2012. The meeting theme was Entrepreneurism. Faculty presenters included Steven Bognar and Julia Reichert—Film and Motion Pictures; Dr. Timothy Cope—Neuroscience; Dr. Nathan Klingbeil—Engineering Success; Dr. Hank Dahlman—CELIA and the Economic Impact of the Arts; Dean Joanne Li—Middle Class Population/Degree Completion.
- Eleven of the fifteen cabinet couples have been solicited or formalized campaign gifts. The total of their collective gifts and solicitation values is \$7 million.
- The colleges and units are finalizing their campaign ideas. Several of them have convened special campaign advisory groups to be helpful to their deans.
- The case statements for the Creative Arts Center, Neuroscience Engineering Collaboration Building, and Scholarships are completed and in use.

Campaign Public Launch

- The date for the campaign public announcement has been rescheduled for the fall of 2014. It will happen between mid-October and mid-November.
- The Master of Ceremonies for the event is proposed to be Tom Hanks.
- The completion of \$100 million in campaign gifts will be announced.
- The kick-off of the public phase will be announced with the remaining \$50 million to be raised. This campaign stage of the campaign is also known as the alumni phase.

Fundraising Progress

Campaign total as of 10/31/2012: \$64,651,379

Sources:

Alumni (16.5%) \$10,683,610

Friends (30.3%) \$19,582,273

Corporations (44.8%) \$28,938,869

Foundations (8.4%) \$ 5,466,624

Designations:

Academic support (92% of goal) \$32,098,292 Goal of \$35,000,000

Facility support (31% of goal) \$ 7,778,684 Goal of \$25,000,000

Scholarships (23% of goal) \$17,484,606 Goal of \$75,000,000

University-wide (49% of goal) \$ 7,289,795 Goal of \$15,000,000

FY13 Results:

Fiscal year to date: \$3,117,041

Last fiscal year to date: \$2,485,753

Difference: +25.4%

BUILDING & GROUNDS REPORT

Friday, November 16, 2012

Development of a Capital Wright Way Policy continues. Supporting procedures, flowcharts, roles and responsibilities, and communications have been drafted in consultation with the Capital Wright Way Policy Committee. Further discussions will be held in December and a final draft policy is expected by the end of the year.

On October 30, a full-day Neuroscience and Engineering Collaborative (NEC) Building design team meeting was held to review massing diagrams, further define programmatic details, and discuss opportunities for donor-funded elements. In addition to the work team, the meeting was attended by the architect Perkins and Will and the construction manager at risk firm, Messer Construction.

The Classroom Building work team met with the architect, Annette Miller Associates (AMA) on November 1 to review for options for the building massing and the relationship to the site. One scheme was selected for further development.

The two program options for consideration for the Creative Arts Center renovations were received November 5. The University will review and provide direction on which scenario will be put into the strategic plan.

Several proposed way finding solutions are under review. Several university groups including CaTS, Facilities Planning and Development, the University Buildings and Grounds Committee, and Student Government are contributing to the planning and execution of this initiative.

Construction will begin on the Raider Connect one-stop and Admissions in December 2012. The temporary relocation of Raider Connect personnel to the Pathfinder Lounge has been completed.

Artificial turf installation in the Nischwitz Baseball Stadium has been completed.

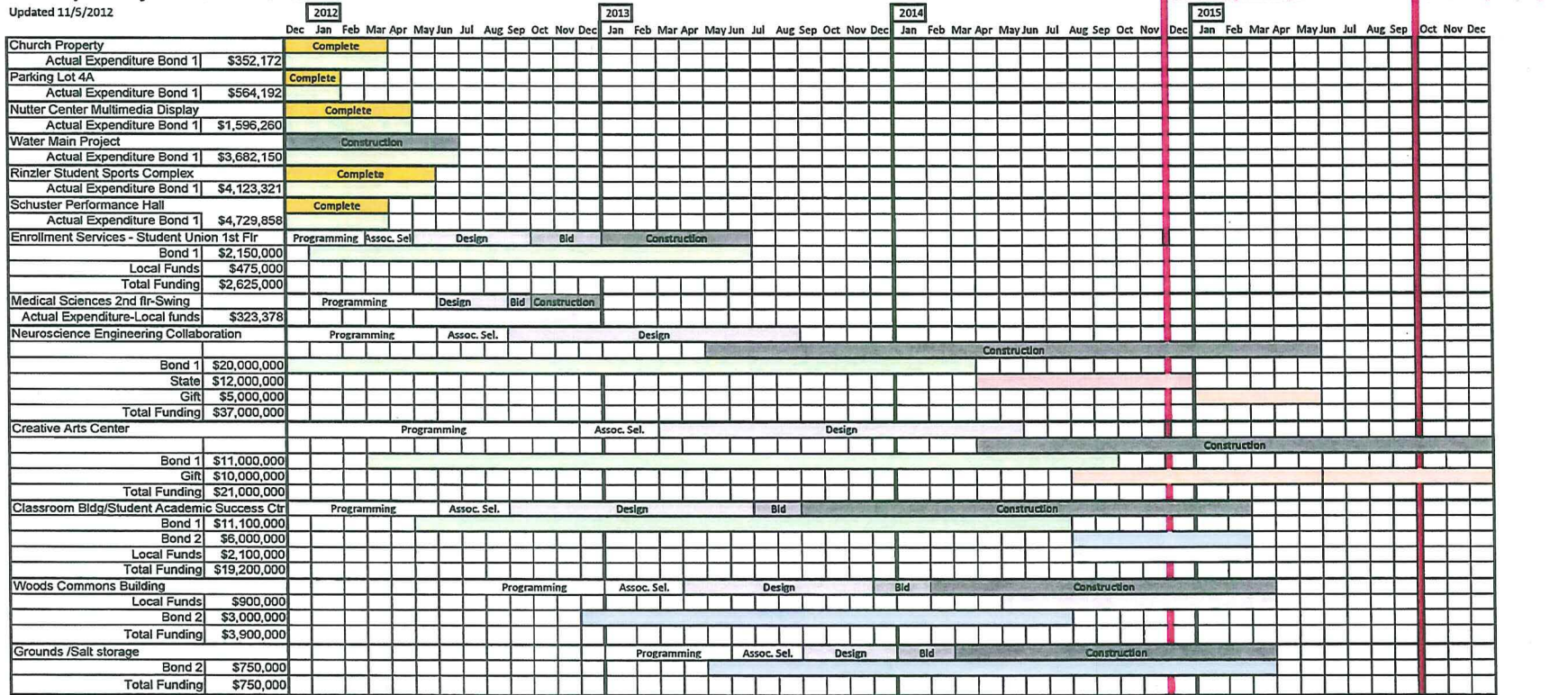
A study is underway on the Dicke Center and Dicke Balcony aimed at accommodating additional faculty offices.

The programming for on the Woods Commons is scheduled to begin this fall, pending outcomes of the current dining study.

The design of the White Hall project second floor to accommodate the new skills assessment training center (ATC) is complete. Construction bids will be opened November 19.

WSU Capital Projects- Bond Timeline

Updated 11/5/2012



legend Bond 1 Bond 2 State Gift Local Funds

Communications & Marketing Report

November 2012

1.) The Value of a College Degree

Two white papers, *Where are we now?* and *What we can do now?*, have been completed as part of the effort to respond to journalistic articles about the value today of higher education, news stories that have pervaded the higher education landscape.

The white papers address what can be done now to tackle matters such as completion, debt, net cost of college vs. gross cost, retention, financial literacy, matching higher education to modern job opportunities, and more.

An Ohio Inter-University Council (IUC) committee comprised of public university communications and marketing leaders will be formed in the weeks ahead to collectively address this issue on behalf of public higher education in the state.

2.) Coverage Ramp

A busy fall has produced important media coverage concerning the following topics:

- Aerospace Professional Development Center at Wright State University introduced; will facilitate job-ready graduates for aerospace and the defense workforce
- New, expanded scholarship program launched
- NCAA President Mark Emmert lauds Wright State's academic model and community service
- Wright State successfully issues \$25M in bonds; university collaborates with its students to complete project for bricks & mortar additions
- Newly-built campus chapel to serve the masses, celebrate diversity
- President visits automotive supplier as part of annual report to Lake Campus community
- Upward Bound program awarded \$1.25M grant
- Wright State awarded Air Force funding for research at Calamityville
- Raj Soin College of Business among nation's best, says *Princeton Review*
- Wright State partners for agriscience STEM academy in Springfield, OH

3.) Changing Lives Part II

The university's outdoor marketing campaign, "Changing Lives ... How?" has been installed on 22 billboards in the region. This year's "How?" theme syncs with wright.edu's homepage graphic and video that links viewers to the Changing Lives online testimonials on Wright State's website. It's a cost-effective way to promote the university by re-telling life-changing experiences through written and video coverage, while also steering people to the university website.

Other videos produced for recent events:

- Former presidents Harley Flack and Paige Mulhollan, both of which were featured at the annual Heritage Dinner
- The grand opening of Rockafield House as the new alumni center

- NCAA President Mark Emmert's address during this year's basketball tipoff luncheon
- The Tiffany Fridley Changing Lives video; and
- Student on the Scene videos featuring student reporter Reilly Dixon. They included coverage of Vice President Joe Biden's stump visit to Wright State; the opening of Raider Connect in the Student Union; and the annual Chili Cook-off at homecoming.

4.) Also ...

Communications and Marketing captured a CASE Silver Award for its "Take 5" campaign as part of semesters conversion ... 49 Wright State news stories were produced for consumer media consumption during a recent six-week period, while 128 on-the-scene photography assignments were fulfilled, and 40 publications were conceptualized, designed and printed ... In all, 376 jobs were completed and delivered.

5.) Division participation highlights

- United Way effort for ComMark division, led by Denise Robinow
- Promotion of the 2013 Quest Conference and President's Lecture series, all staff participating
- Participation in the effort to gain recognition for the third consecutive year on President Obama's Higher Education Service Honor Roll for community service
- A training workshop for Communications and Marketing staff members to polish work in the areas of copy editing and proof reading
- Web team participation in this year's annual Drupal Camp in Columbus. Drupal 7 is the software in which wright.edu is being redesigned and reconstructed. Two of our web team members, Mark Anderson and Chase Cathcart, will lead workshop discussions during the two-day seminar.
- New web sections now live on wright.edu:
 - School of Professional Psychology (SOPP). See psychology.wright.edu
 - Theatre, Dance and Motion Pictures.
See [wright.edu/theatre-dance-and-motion pictures](http://wright.edu/theatre-dance-and-motion-pictures)
 - Student Activities. See wright.edu/student-activities
 - Career Services. See wright.edu/career-services

WRIGHT STATE UNIVERSITY
BOARD OF TRUSTEES

Enrollment Management Report
November 16, 2012

1. Undergraduate Admissions/Recruitment/Enrollment Marketing

- The Fall Raider Open House, held on November 10th, was the second largest open house in Wright State's history with more than 1,100 students and families visiting the campus to meet with faculty and current students, and to attend sessions on the many opportunities available as a student at Wright State University.
- More than 21,000 prospective student households received a mailing from Wright State as part of a comprehensive "College is Affordable" and "Can You Afford Not To?" campaign. This campaign was launched the week of October 22 with a letter from President Hopkins followed by a brochure that included information on the importance of a college education and how students and families can pay for college. These students were also invited to attend the "College is Affordable" workshop at the November 10 Raider Open House.
- The second phase of the "College is Affordable" campaign shared the news that the University's investment of an additional \$3 million in scholarships. The campaign provided a number of touch points to more than 21,000 direct from high school students including flash emails, a postcard to student's household, and new and updated web pages and information rotating on the home page.
- Enrollment Management has extended its reach into the colleges and departments by partnering with deans and program chairs to develop marketing, recruitment and communication plans that will support university, college, and program enrollment goals.
- Undergraduate Admissions is on the road this fall visiting more than 200 high schools and college fairs. In September/October, more than 1,000 prospective students and families have taken a campus tour and met with the admissions team. Recruitment plans are in full swing with increased communication highlighting the outstanding academic colleges and faculty.

2. Financial Aid

- The Office of Financial Aid collaborated with the Provost and Business and Fiscal Affairs to develop a new Academic Performance Scholarship (APS) Program. More than \$3 million from the general fund has been invested in the new program that will be used for the recruitment of new, direct from high school students beginning fall semester 2013. Under the new program, a student who applies for admission for fall semester by March 1 and meets the requirements as detailed below, will receive the scholarship:

| <i>Scholarship Program Name</i> | <i>Award Amount</i> | <i>Requirements</i> | <i>Renewal Requirements</i> |
|---|-----------------------------------|--|---------------------------------------|
| Wright Promise Scholarship | \$1,500-renewable | Must meet both: GPA Requirement: 3.0 Minimum ACT: 22 | GPA earned = 2.5 Hours earned = 24 |
| Raider Excellence Scholarship | \$2,500-renewable | Must meet two of three: GPA Requirement: 3.50 Minimum ACT: 27 Rank in top 10% of graduating class | GPA earned = 3.0 Hours earned = 30 |
| Valedictorian/Salutatorian Scholarship (tier one) | Full In-State Tuition - renewable | Minimum ACT: 30 Documentation proving Valedictorian/Salutatorian ranking | GPA earned = 3.0 Hours earned = 30 |
| Valedictorian/Salutatorian Scholarship (tier two) | Half In-State Tuition - renewable | Minimum ACT: up to 29 Documentation proving Valedictorian/Salutatorian ranking | GPA earned = 3.0 Hours earned = 30 |

- On Saturday, November 10, the Office of Financial Aid presented a "College is Affordable" Workshop at the Raider Open house to students and their families. This presentation covered how to financially plan for a college education, financial aid information, and announced our new scholarship program. We will continue to develop opportunities to educate students and their families on how financial planning can make college education more affordable.

3. Raider Connect

- The transition to Raider Connect on October 1, 2012 has already begun to show indicators of efficiency and quality. For example, for a given interaction, students are interacting with one staff member in sessions that are more comprehensive (though slightly longer) instead of 2 or 3 individual staff in separate offices. Although formal student satisfaction surveys are pending, students are sharing positive feedback about the service. During the first 4 weeks staff served:

- 1,763 walk-in students, an average of 88 walk-in students per day;
- 4,071 phone calls, an average of 204 calls per day;
- 402 emails, an average of 20 emails per day.

4. Registrar

- On the semester calendar, Summer 2013 registration will begin mid-February and Fall 2013 in mid-March, allowing more time for students to meet with advisors through the end of April.
- The Office of Veterans Affairs will co-host Presidential Lecture Series speaker Genevieve Chase, Founder and Executive Director of American Women Veterans, on Tuesday, November 20 at 7:00 p.m.
- Over Labor Day weekend, staff from the Registrar's Office and CaTS converted academic history to semester hours. The cumulative hours earned are now reflected in semester hours in preparation for the close of the Fall 2012 semester.

Division of Multicultural Affairs & Community Engagement
Report to the Wright State University Board of Trustees
November 16, 2012

Program Updates

Bolinga mentoring/tutoring programs: Seventy-seven (77) students are currently participating in a tutoring/mentoring program coordinated by staff in the African-American cultural center. Students also have the opportunity to participate in a peer mentoring program, Vision Mentoring, sponsored by the Center.

The Asian/Hispanic/Native American (AHNA) Center hosted a dinner in honor of its 15th Anniversary. Among the 120 guests were Congressman Steve Austria, Lynette Stevens, Director of Minority Affairs for the Governor's Office, and former Wright State University President Kim Goldenberg.

The Women's Center is currently piloting an internship program. Five students have been given the opportunity to assist in the implementation of Center programming and are bringing a fresh perspective to the work of the unit.

Staff in all the Multicultural Centers have been engaged in numerous education and outreach programs including teaching courses, guest lecturing in classes, training for student organizations and other campus groups, informal mentoring and supportive counseling of students as well as consultation with faculty, staff and administrative colleagues.

Events

The events listed are just a small sample of the many informative programs offered by offices within the Division of Multicultural Affairs.

Sitting Bull: His Life and Legacy was a lecture presented by Ernie LaPointe, the great-grandson of the Hunkapapa Lakota chief Sitting Bull. LaPointe discussed Lakota culture and family tales told to him about his great-grandfather. A book signing followed the lecture which took place on November 8, 2012 in the Millet Atrium on campus.

The Invisible War film screenings and panel discussions took place October 30, 2012 in the Millett Atrium and Medical Sciences Atrium. It was a discussion of a groundbreaking documentary investigating what is described as one of America's most shameful and best kept secrets, the epidemic of rape within the U.S. military. The film focuses on the powerfully emotional stories of rape victims and is a moving indictment of the systematic cover-up of military sex crimes, chronicling the women's struggles to rebuild their lives and fight for justice.

2,000 Miles North film screening and discussion was led by Sherrel Rieger on October 16, 2012. Ms. Rieger is a teacher and native of Dover who has served as translator, interpreter, school liaison and advocate for immigrant rights. The film shares personal stories of Guatemalans in Tuscarawas County Ohio including the abject poverty and personal tragedy that bring them to the U.S. in search of hope. It also chronicles the challenges they face in overcoming language, social, cultural and legal barriers.

Annual Multicultural Halloween Celebration: This holiday celebration combines the traditional Halloween customs of North America with other fall holiday customs celebrated around the world. This includes the African American "Kwanzaa"; the Asian Indian "Diwali"; the Chinese and Vietnamese "Mid-Autumn Festival"; "Chusok," the Korean Thanksgiving; the Japanese "Bon" holiday; the Nigerian "Yam Festival"; The Mexican "Day of the Dead"; and the Native American Fall Harvest. The Multicultural Halloween is a collaborative effort of several Wright State student organizations and features multiethnic costumes, diversity of music and dance, a variety of multicultural foods, and a costume contest for adults and children.

Community Involvement/Collaborations

Project to recruit Native American students attending Tribal Colleges: The Director of the AHNA Center continues work on a plan to recruit Native American students in collaboration with the Executive Director of the Miami Valley Council of Native Americans and staff in Enrollment Management. The Gateway Program, a program designed for local students currently enrolled in an associate's degree program at Clark State or in need of additional academic preparation before enrolling in a Wright State University degree program, is one model being considered as a template for the program.

The Director of Affirmative Action Programs is serving as Co-chair of the Dayton MLK Scholarship program and the MLK poetry/essay/art program. Edward Depp a staff member in the office was also recently appointed to the Board of Trustees of the greater Dayton Regional Transit Authority.

The Vice President for Multicultural Affairs & Community Engagement provided training for members of the Montgomery County Children's Services Diversity Awareness Committee and attended the following community events of note during the month of October: African American Community Fund Anniversary Dinner, Dayton Human Relations Council Awards, Cameos of Caring, the National Council for Community and Justice's (NCCJ) 35th Friendship Dinner, and the NAACP Freedom Fund Banquet.

Grant Award

Amy Vlasnik, Women's Center Director, has been awarded an American Association of University Women (AAUW) Campus Action Project grant for \$4,275.00. The title of the proposal was, *Learn, Negotiate, Succeed: Educating to End the Wage Gap*.

Vice President for Research
Report to Board of Trustees
November 26, 2012

Compliance Officer: four finalists were shortlisted, and interviews have been conducted. The search committee has made a recommendation to hire, and final negotiations are underway. This critical position, which will cover the major areas of human subjects protection, financial conflict of interest, and responsible conduct of research, is partially funded through our partnership with Premier Health Partners (the Clinical Trials and Research Alliance; CTRA).

Technology Transfer Office: the incumbent technology transfer manager, Mr. Reid Smith, resigned effective September 30 to take a similar position at Miami University, Oxford. Ms Elana Wang, JD, is serving as interim director. During this transition time the office of technology transfer and development will be reorganized to better serve our faculty, external sponsors, and partners, and to further improve our capacity to commercialize the results of our research efforts.

NCMR: Wright State University recently secured a \$500K contract from AFRL. The award will support collaboration involving expertise from the University, a number of regional partners, and AFRL, and it will serve as the foundation for the development and implementation of live, virtual, constructive (LVC) training platforms that can meet current and future Air Force needs, including providing the 711th Human Performance Wing (HPW) with a comprehensive plan for the use of the Calamityville site to support the integration, tracking, monitoring, interaction, training, rehearsal, and exercise activities in the domains of emergency response personnel (i.e., humanitarian assistance, emergency responders, disaster response coordinators, mobile medical teams, and special operations and pararescue personnel).

Grantsmanship: RSP has engaged Hanover Research to assist faculty in preparation and submission of major grant proposals. In addition, Hanover have performed a 2-day site visit to compile an Institutional Profile for the university, and conducted a day-long series of workshops for faculty from various colleges and disciplines. These workshops were well received by participants.

Ohio Link: Chancellor Petro issued a Directive that OhioLINK's fiscal agent will change from Wright State University to Ohio State University to complete the administrative integration of OhioLINK into OH-TECH, along with the restructuring of other OH-TECH units (https://ohiohighered.org/sites/ohiohighered.org/files/Directive_%202011-023_ADDENDUM-FINAL.pdf). This will be reflected in a significant decline (approx. \$15M per year in sponsored activity revenue at WSU. Several WSU divisions will be involved in significant administrative work to effect this transition.