



Kino : Making Semantic Annotations Easier

Ajith Ranabahu[#], Priti Parikh[#], Maryam Panahiazar[#], Amit Sheth[#] and Flora Logan-Klumpler^{*}

[#] Ohio Center of Excellence in Knowledge-enabled Computing (kno.e.sis)

^{*} Sanger Institute and University of Cambridge, UK



What is Kino ?

- A search engine of sort currently specialized for scientific domains
 - Semantic Annotation (using SA-REST) for services and documents (or any Web resources)
 - Indexing system
 - Uses SA-REST, Faceted search
 - integrates with NCBO
- Tools include browser plugin & back-end server



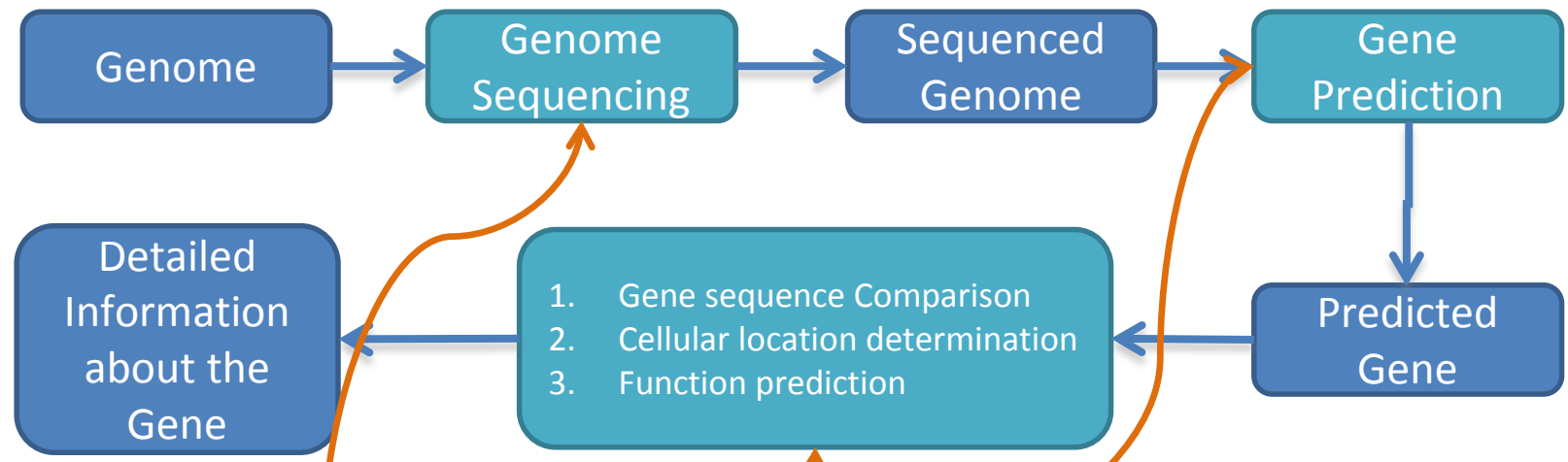
FROM INFORMATION TO MEANING

Two use cases

- **service lookups:** eg: BioCatalogue returns about 75 Web services for the search term “gene prediction”. However, it returns only 20 Web services for the term “gene finding”, even though gene prediction and gene finding are synonyms.
- supporting the whole cycle of annotation and curation at Sangers



Use case 1 : Service lookups for gene data

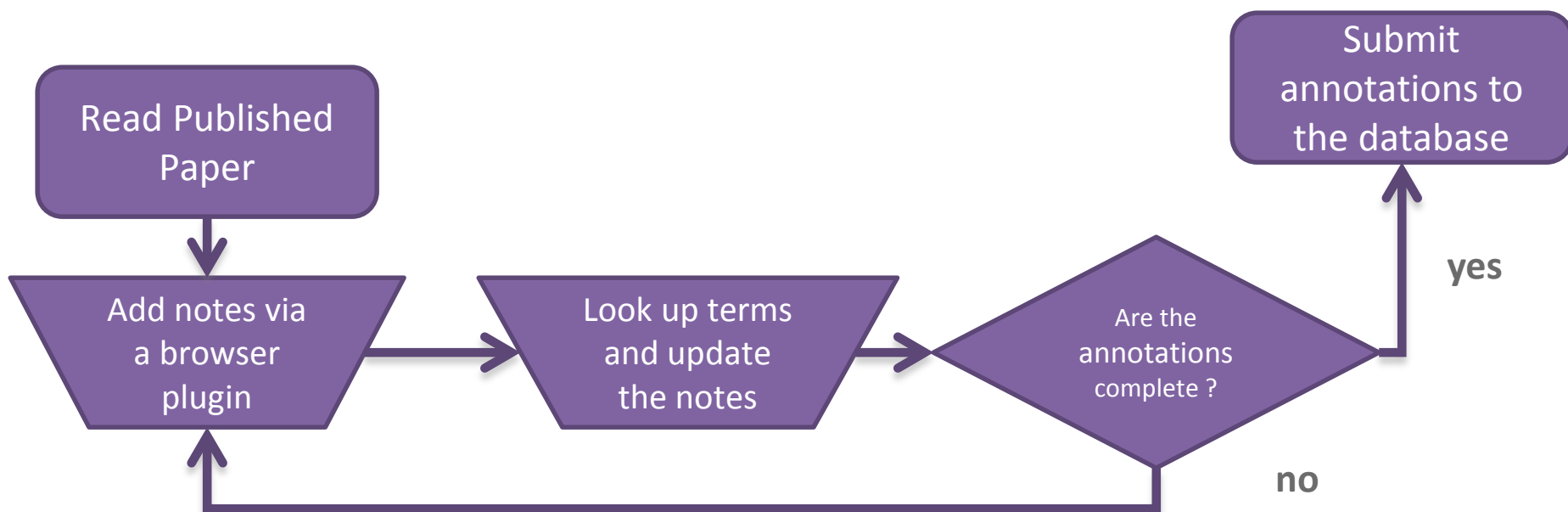


Find Web services using a service catalog for these operations

Tagging is not consistent, keyword based Lookups are not accurate and do not take synonyms into account !



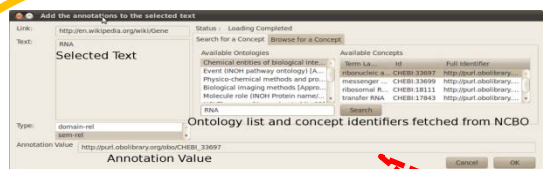
Use case 2 : Scientific Document Annotation



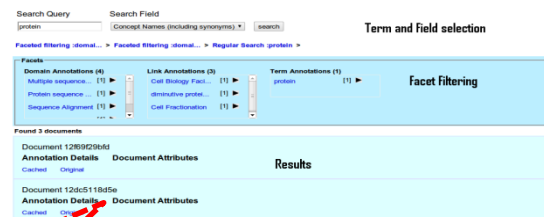
Long and cumbersome cycle of term lookup and updates. This done by scientists – is there a way to make this process easier for them ?

How does it work ?

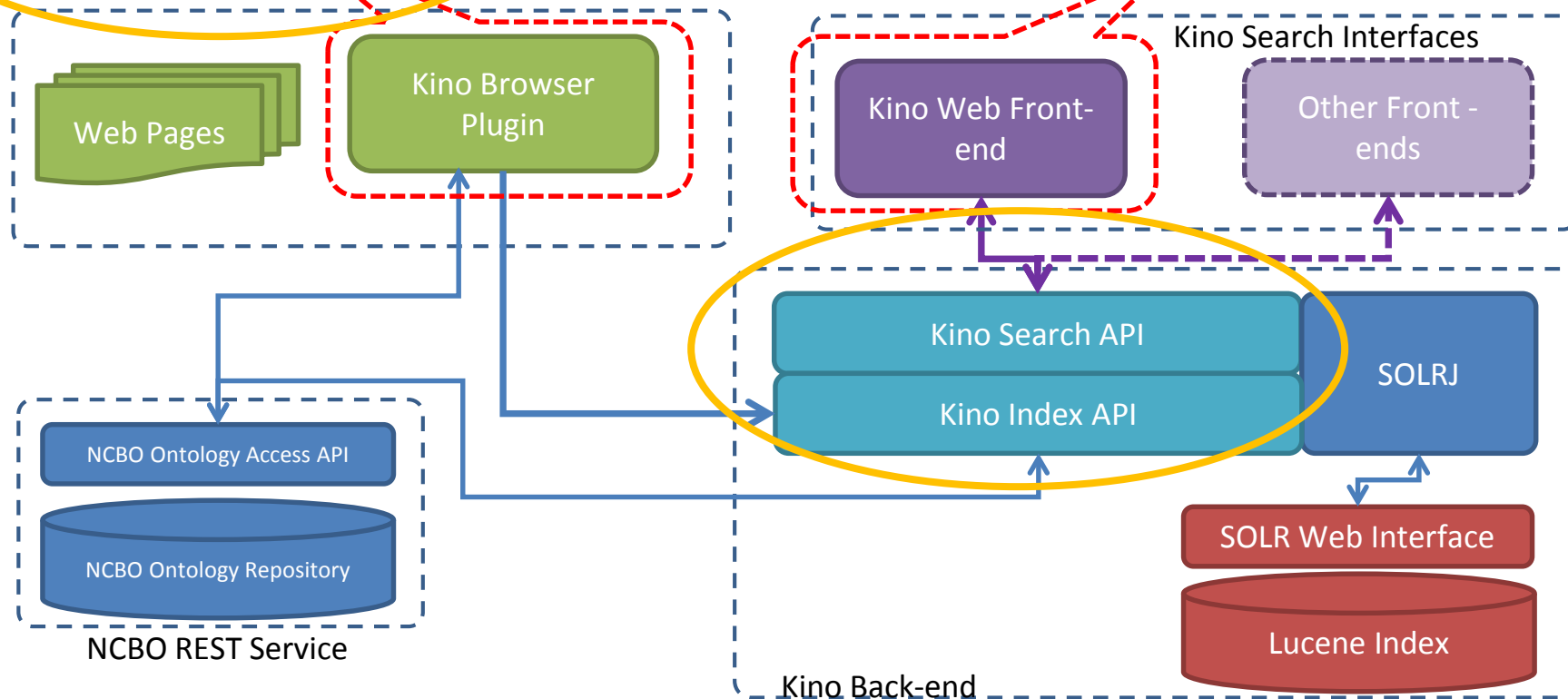
FROM INFORMATION TO MEANING



Kino browser based annotation



Kino Search Interfaces



Kino Back-end



What did we learn?

- Back-end automatically including even the synonyms make a significant improvement in search recall.
- Having integrated tooling enables faster cycles in scientific literature annotations.



Check out our poster for more details

Video demo at

<http://wiki.knoesis.org/index.php/Kino>

Paper at

<http://knoesis.org/library/resource.php?id=1553>